

REPORT OF THE TRAINING SEESIONS COMMITTEE (meeting held Thurs. July 26)

The three dates for the training sessions will be Aug. 2 (Tues.) at 8:00 pm and Aug. 7 (Tues.), Aug. 9 (Thurs.) also at 8:00 pm in the Drop-In Centre.

The first session on Aug. 2 will deal with Crisis Intervention and Training. To do this adequately we'll need a group format. Since we anticipate upwards of 30 people to attend these sessions we have 4 group leaders who have been suggested; Tom Sandbourn, Lanny Beckman, Kathy Carney and Dick Betts with Barry Coull and Fran Phillips as back-up leaders should they be needed.

This first session will meet in the Drop-in living room at 8:00 pm to divide into groups and retire to various rooms in the DIC to go through group discussion and possible role-playing procedures (We're still trying to get video for a training aid). Each group can of course decide on its own best methods for training itself. Hopefully each group will pay serious attention to questions of "freak-outs", violence, group handling of heavy situations, depression and other things suggested by the TRAINING MANUAL which is being prepared for the sessions and which will be passed around Aug. 2.

The second session, Aug. 7, will deal with first aid and drug emergencies. Both these topics can be dealt with in two larger groups with Fran Phillips and Barry Coull handling first aid and drug emergencies respectively. Fran and Barry can alternate between the two groups so 1/2 the evening can be devoted to one and 1/2 to the other. The TRAINING MANUAL will contain materials on first aid and maybe drugs if we can get that together by then.

The third session, Aug. 9, will deal with referrals to other agencies, hospitals, and legal aspects. The legal aspects will be in the TRAINING MANUAL and info. on hospitals can be found in the Drop-In Manual. We hope to have someone from the peoples' law school in to speak and possibly if we can reach them in time, someone from police public relations to explain how the police view section 27 (the section dealing with police arrest) of the Mental Health Act and what their procedure is on cases like this. Other helpful information can come from people already working here on matters like referral to other agencies, from other agencies, welfare hassles and the like.

We hope these training sessions will provide useful information as well as a sense of cohesion in MPA. If someone knows that somebody else can deal with situations as well then it makes for better work as well as security. These sessions are open to everyone from MPA but the TRAINING SESSION COMMITTEE recommends that COORDINATOR ATTENDANCE BE REQUIRED FOR ALL SESSIONS.

-respectfully submitted by Jackie Hooper,
Fran Phillips and Dick Betts

As you probably know by now we are having a party. The occasion is MPA's second anniversary and we need you to help us celebrate. The location of this happening is Alexander Neighborhood House at 1726 West 7th Ave. It's on Saturday March 31st at 7:30. There will be live music for those who like to boogie and an adjoining room full of food and a terrific punch for those who prefer to sit back and gab or eat or recuperate from the frenzied activities in the main ball room. The cost of admission is nominal - for those who don't know what that means it means it's free.

COUNTRY PIE

The weekend of April 7th we have a cabin on Hollyburn Mountain. It's an A frame and sleeps about 40 people. There is a hike to get in but if the rest of you are as out of shape as I am perhaps we can use the exercise. If you want to go please let Charlene or Patty know so we can make arrangements for food, sleeping bags, transportation and other various and sundry things.

On April 21st Rolly is leading a group of veteran campers on a "rough it" trip away from all modern conveniences. If anyone knows of a small generator that will run a T.V. and stereo please let Rolly know. If you can endure the serenity of the country for a full weekend get in touch with Rolly at the drop-in center. Those who would like a less strenuous weekend see above under Country Pie.

ELECTIONS

At the next General Meeting we will be electing TWO DROP-IN CENTER CO-ORDINATORS. The election is on Wednesday, March 28th. Applications must be in to Patty by noon of the 25th to give us time to make up the ballots.

REGULAR ACTIVITIES

MONDAY

12 noon-drop-in center meeting.

Tom Sandborn and his flying circus (the gestalt group that knocks the plaster off the living room roof onto innocent by-standers below) is leaving to roam the country in search of his lost ID. Due to this unfortunate development MPA is without a gestalt group at present but perhaps we can find a new leader soon.

TUESDAY

12 noon - busyness meeting where all sorts of serious and completely irrelevant facts become known.

6:30 - 9 Hairdressing. Come-it's enough to curl your hair.

7:30 Claytons religious discussion group.

8:00 Drinkers group - I should perhaps make it clear here that this group is for people interested in stopping, not starting.

WEDNESDAY

10:30-3:30 Crafts Sewing and fabric arts.

3:30 Cooking Lessons

6:00 Supper made by the MPA master chefs.

7:30 Encounter Theatre at West End residence

THURSDAY

10:30-3 Crafts. Fibre arts (macrame and weaving)

12:30 Hospital trip to Riverview. Come on out and visit our friends in the hospital. The only difference between us and them is they got caught.

A Politics Nite.

FRIDAY

10:30 Farm trip leaves drop-in

10:30-3 Crafts. Print making, drawing, painting.

SATURDAY

- 11:00 breakfast for everyone. Bacon, eggs, juice, toast and coffee - free
After breakfast Rolly will be taking an outing. The destination is open
but some suggestions are ; Stanley Park, the aquarium, the beach, etc.
8:00 sing-a long and refreshments. Don't tell a soul but rumor has it that
a certain musician well known to MPA might be coming a regular part of
the saturday night songsters.

SUNDAY

- 2:00 Creative writing course. Come and learn how to put it down on paper.
7:30 Male-Female discussion group. Come and learn how to put it down.



Lanny Beckman
2504 York St.
Van. B.C.

A Proposal for a New MPA Structure: Ideas on the formation of support groups

For the October MPA Conference

Submitted by Lanny Beckman

In the good old early days of MPA, when we were too small to be an institution, or even a para-institution, there were greater feelings of closeness and contact among the members. Then, we could all meet in one room, there were fewer business items, more time for people to express themselves.

In the intervening years, things have slowly changed. As the membership grew too large to congregate in one small room, we have not taken steps to replace the old structure. Hence, feelings of alienation and demoralization within the group. I feel them strongly.

One thing MPA has never systematically done is to develop a program of "therapy" (except for the few "encounter" groups which, though important, involve only a tiny percentage of the members). In the early days the closeness of the MPA community constituted a therapeutic setting. Since then we have allowed ever-widening gaps to grow between us. It has seemed to me as if the machine has set off on an irreversible course.

The purpose of this proposal is to contribute to discussion about the possibility of changing direction.

To change direction I don't believe it is enough merely to try to change attitudes of members. That is a possible solution in a very small community, but not in one as large as MPA. We need a structural change to serve as the soil in which new attitudes can grow.

At present MPA's structure is defined almost entirely in terms of work areas, not in terms of people. Responsibility is felt to do such and such a chore (order coffee, write a report, do house shopping, drive people to an activity) but not to provide ongoing support for those who most need it. It is easy for everyone to say, "That is not my job."

Although not formally defined as their job, it is the best intentioned people who try to help very freaked-out members. These "helpers" are few in number and quickly burn themselves out because they do not have the necessary back-up support. They also tend to leave the group when they feel the futility of trying to help so many people. (I should note here that the points I have been raising apply mainly to the drop-in centre rather than the residences. They may apply to the residences too, but I am less familiar with them.)

I keep coming back to this irrefutable fact: we are spending more of our energy doing secondary than primary tasks. This is the situation with most bureaucracies. They expend more time perpetuating themselves than performing the function they were established to do.

As long as people gravitate to the few "amateur" therapists, the general feeling will remain that you can't really get the help you need at MPA. The amateur therapists (amateur, by the way, comes from the Latin, amor, meaning love) cannot handle the demands along. And who do they turn to when they freak-out?

In case we have forgotten, MPA is a self-helpgroup, meaning that we are all supposed to help each other. But we need a structure within which that goal is possible. The meat of this proposal is to suggest a structure in which we can put the primary goal first, i.e., of supporting each other.

There is a certain amount of necessary paperwork that must be done to keep MPA going. But we can cut it down to a minimum, and, as an experiment, we can set up small support groups which any member can join voluntarily. Much of the work energy that is now put into areas like transportation, activities and political action would be put into sustaining the support groups.

Here are a few guidelines I suggest for the support groups:

- 1) They be made up of 5 to 7 people, including members and coordinators.
- 2) The members of the support groups make a commitment to meet at least once a week for at least one hour. (Several other activities can be scrapped to make room for these support group meetings.)
- 3) The members make a commitment to try to get to know each other and to open up to one another. But this should not be used as a demand to pressure others into speaking when they don't want to. People can choose at any time to remain silent.
- 4) The members make a commitment to try to support one another in all areas of their lives, i.e., that they try to learn to turn to each other first when a problem or crisis arises. This means that everyone will try to learn to support others and to learn how to accept support.

One purpose of this proposal is to ensure that people don't get lost in the shuffle at MPA; that the less outgoing and more freaked-out members will have an opportunity to share their lives with, and receive support from, others.

I think if we adopt this structure, which is really a very simple idea based upon the "buddy system" (a terrible name) used by other groups, we should start out with a very simple set of demands on the groups. The structure should be seen as an experiment with each group given maximum freedom to explore its own needs and functions.

There will probably be some resistance to this proposal because these groups may cut across certain natural groupings at MPA, e.g., friendship groups and residence groups. I think, however, that there should be some randomness in the composition of groups. This is to avoid the situation where the stronger, more popular people end up in the same group, which would only reinforce the clique-
ishness and exclusion which already exists to some extent. There should be some self-selection in the support groups, but we should guard against the possibility of shy or freaked-out people being excluded or being all lumped together.

To begin, I suggest that 10 to 15 people be chosen to serve as the nuclei of support groups. It will be the responsibility of each of these core people to find 4 to 6 others to join their groups, i.e., people who agree to the commitments listed above.

I can't want to get too far ahead of myself, but I think some thought should be given to regular reviews of the structure to see whether it's working. Perhaps there could be bi-weekly meetings of support group representatives to review the structure.

C D Gen C D G C D G E M C G X 6 7 D
Universal Soldier

A Proposal for a New MPA Structure: Ideas on the formation of support groups

For the October MPA Conference

Submitted by Lanny Beckman

In the good old early days of MPA, when we were too small to be an institution, or even a para-institution, there were greater feelings of closeness and contact among the members. Then, we could all meet in one room, there were fewer business items, more time for people to express themselves.

In the intervening years, things have slowly changed. As the membership grew too large to congregate in one small room, we have not taken steps to replace the old structure. Hence, feelings of alienation and demoralization within the group. I feel them strongly.

One thing MPA has never systematically done is to develop a program of "therapy" (except for the few "encounter" groups which, though important, involve only a tiny percentage of the members). In the early days the closeness of the MPA community constituted a therapeutic setting. Since then we have allowed ever-widening gaps to grow between us. It has seemed to me as if the machine has set off on an irreversible course.

The purpose of this proposal is to contribute to discussion about the possibility of changing direction.

To change direction I don't believe it is enough merely to try to change attitudes of members. That is a possible solution in a very small community, but not in one as large as MPA. We need a structural change to serve as the soil in which new attitudes can grow.

At present MPA's structure is defined almost entirely in terms of work areas, not in terms of people. Responsibility is felt to do such and such a chore (order coffee, write a report, do house shopping, drive people to an activity) but not to provide ongoing support for those who most need it. It is easy for everyone to say, "That is not my job."

Although not formally defined as their job, it is the best intentioned people who try to help very freaked-out members. These "helpers" are few in number and quickly burn themselves out because they do not have the necessary back-up support. They also tend to leave the group when they feel the futility of trying to help so many people. (I should note here that the points I have been raising apply mainly to the drop-in centre rather than the residences. They may apply to the residences too, but I am less familiar with them.)

I keep coming back to this irrefutable fact: we are spending more of our energy doing secondary than primary tasks. This is the situation with most bureaucracies. They expend more time perpetuating themselves than performing the function they were established to do.

As long as people gravitate to the few "amateur" therapists, the general feeling will remain that you can't really get the help you need at MPA. The amateur therapists (amateur, by the way, comes from the Latin, amor, meaning love) cannot handle the demands along. And who do they turn to when they freak-out?



In case we have forgotten, MPA is a self-help group, meaning that we are all supposed to help each other. But we need a structure within which that goal is possible. The meat of this proposal is to suggest a structure in which we can put the primary goal first, i.e., of supporting each other.

There is a certain amount of necessary paperwork that must be done to keep MPA going. But we can cut it down to a minimum, and, as an experiment, we can set up small support groups which any member can join voluntarily. Much of the work energy that is now put into areas like transportation, activities and political action would be put into sustaining the support groups.

Here are a few guidelines I suggest for the support groups:

- 1) They be made up of 5 to 7 people, including members and coordinators.
- 2) The members of the support groups make a commitment to meet at least once a week for at least one hour. (Several other activities can be scrapped to make room for these support group meetings.)
- 3) The members make a commitment to try to get to know each other and to open up to one another. But this should not be used as a demand to pressure others into speaking when they don't want to. People can choose at any time to remain silent.
- 4) The members make a commitment to try to support one another in all areas of their lives, i.e., that they try to learn to turn to each other first when a problem or crisis arises. This means that everyone will try to learn to support others and to learn how to accept support.

One purpose of this proposal is to ensure that people don't get lost in the shuffle at MPA; that the less outgoing and more freaked-out members will have an opportunity to share their lives with, and receive support from, others.

I think if we adopt this structure, which is really a very simple idea based upon the "buddy system" (a terrible name) used by other groups, we should start out with a very simple set of demands on the groups. The structure should be seen as an experiment with each group given maximum freedom to explore its own needs and functions.

There will probably be some resistance to this proposal because these groups may cut across certain natural groupings at MPA, e.g., friendship groups and residence groups. I think, however, that there should be some randomness in the composition of groups. This is to avoid the situation where the stronger, more popular people end up in the same group, which would only reinforce the clique-ishness and exclusion which already exists to some extent. There should be some self-selection in the support groups, but we should guard against the possibility of shy or freaked-out people being excluded or being all lumped together.

To begin, I suggest that 10 to 15 people be chosen to serve as the nuclei of support groups. It will be the responsibility of each of these core people to find 4 to 6 others to join their groups, i.e., people who agree to the commitments listed above.

I can't want to get too far ahead of myself, but I think some thought should be given to regular reviews of the structure to see whether it's working. Perhaps there could be bi-weekly meetings of support group representatives to review the structure.

SPASTIC ACTIVITIES

The baseball season is on us once again and it looks like M.P.A. is going to be in there slugging right to the end. We played our first game and won. Another MPA first. The season is starting off slow but soon we hope to have a couple of games a week. It has been suggest that we change our name from the Napoleons to Mighty Poor Atheletes. Check with the drop-in center for game times and anybody is welcome to play, keep score, umpire or cheer.

Now that we have our brand new van with seats and lots of space we're going to be going on outings to various scenic spots such as Deep Cove, Wreck beach etc. Contact Molly for times and destinations.

RACE TRACK MEETS

Rolly has arranged free admittance and Pit passes to all meets at Woodburn race track. After the races we can go talk to various drivers about their cars and stuff. For more information contact Rolly.

ELECTIONS ELECTIONS ELECTIONS ELECTIONS ELECTIONS ELECTIONS ELECTIONS

Terry has resigned as communications coordinator and the job is now open. There will be an election on Wed., May 9 at the General Meeting to fill the position.

The job of communications coordinator involves putting out the monthly newsletter ("In A Nutshell") and producing MPA information pamphlets. The coordinator works with a group of MPA members who form the newsletter committee.

In addition to gathering news stories, announcements and creative writing from MPA members, committees and houses, the coordinator should have knowledge of basic journalistic techniques and skill in doing community newspaper layout.

If you're interested in running for this position get in touch with Patty. The deadline is Tuesday noon, May 8. In addition, there will be elections at the end of the month for all positions. Several people will not be re-applying, so some positions will be open.

GOSSIP & WORLD TRAVEL

...Earl is having a luxurious holiday in Toronto for a month....Lanny and Barb returned from a camper tour of the B.C. wilderness. Mostly they were parked in front of the Parliament Buildings in Victoria and busily lobbied MLAs...Dick and Koko and Lloyd are swimming home from Japan and are expected to arrive dripping-wet at MPA in mid-May....Spring is here. You can tell by the sprouting baseball bats...Gerald Teroldi returned from a week's vacation at Dave Barrett's house in Victoria...MPA Press Secretary Arthur Dunglebung has firmly denied that any high-level MPA officials were involved in the Watergate affair....Franc did a tour of Tofino desperately collecting ex-mental patients to relate to...Evelynn is leaving for England next week. Her main goal is to get the Rolling Stones to come to an MPA sing-a-long...One of our coordinators has left this institution for another: that of marriage. Avi and Ruth got hitched in a garden wedding May 1....

SPECIAL ARTS & CRAFTS ACTIVITIES

On Monday May 7 bring your lunch and we will have a fun trip to the beach to make sand-cast candles. Dress warmer than for street wear as it may be windy and colder: In the evening at 7:00 Brian from the Leather Box will be teaching the skills of leather work. If you would like to learn to make belts, wallets, handbags, etc., come to the Drop-In Centre. We will start with something simple before the more ambitious projects. This may become a source of income for you as Brian has said he is interested in selling what you can make. Come out and give it a try.

REGULAR ACTIVITIES

MONDAY

Drop-in centre meeting. We would like to see more members coming to this meeting to discuss what kinds of activities you would like to see happening.

Crafts house visits. Ann will be going to different M.P.A. residents to help people with projects they are interested in as well as help decorate the houses.

Leather workshop. The people from the Leatherbox will be coming in on Monday nights to teach leather crafts. If you wish to sell your leatherwork the Leatherbox will sell it through their store. It's an excellent opportunity to make a little extra money or enhance your own wardrobe.

TUESDAY

As usual the business meetings are held at twelve noon at the drop-in centre.

WEDNESDAY

Politics nite. Has been changed to wednesday. Dick Potts will be trying to bring in a variety of interesting guest speakers to discuss different subjects related to politics.

Ann will be at the drop-in center to do any kind of crafts people are interested in. Some of the things that have been done in the past are: batik, macrame, belt weaving, tie-dye, and candle making. As the weather gets warmer there will be trips outside M.P.A. such as going to the beach to make sand candles. For more information contact Ann.

Three Movies at the Indian Centre (3rd and Vine) at 7:30

May 9 Boys in the Band (off Broadway cast)
 May 16 The Ugly American (Marlon Brando, Sandra Church)
 May 23 The Great Escape (Toby Curtis, Edmund O'Drian)

FREE SUPPER at the drop-in center every Wednesday at 6 o'clock. Mark comes in to whip up gastronomical delights. A full stomach makes a healthy mind.

THURSDAY

Every thursday the van leaves the drop-in - destination Riverview to visit with all our friends who got caught.

Crafts house visit - see above under monday.

FRIDAY

10:30 the van leaves the drop-in centre to visit the M.P.A. farm. It's a nice relaxing day in the country.

SATURDAY

11 A.M. Molly dons her apron and white chefs hat to whip up a free breakfast for everyone. The usual fare is bacon, eggs toast and coffee.

SUNDAY

Male-female discussion group. The discussion group is happening every sunday with a fairly small but tight group. If your interested it at 8 o'clock in the quiet room.

JANUARY ACTIVITIES NEWSLETTER

MENTAL PATIENTS ASSOCIATION
DROP-IN CENTRE
1982 West 6th Ave Vancouver
738-5177 738-1422

January 9	Wednesday	11:15 am	meet at the Drop-In Centre for a trip to the Art Gallery to hear the Vancouver Brass Quintet
January 9	Wednesday	6:00 pm	Dinner at the Drop-In (Free)
January 11	Friday	11:30 am	leaving from Drop-In for Gondola Skyride at Grouse Mountain (15 people only)
January 12	Saturday	11:00 am	Breakfast - Drop-In Centre
January 16	Wednesday	6:00 pm	Dinner at the Drop-In (Free)
January 17	Thursday	11:15 am	Leaving Drop-In Centre to attend a blend of east and west Jazz Faga at the Art Gallery
January 19	Saturday	11:00 am	Breakfast at the Drop-In Centre
January 23	Wednesday	6:00 pm	Dinner at the Drop-In
January 24	Thursday	11:15 am	meet at the Drop-In Centre to go to the Art Gallery to see 3 Charlie Chaplin films
Some Tuesday Evenings			Religious Discussion (as announced) at Drop-In
Some Wednesday Evenings			Political Night (as announced) at Drop-In

Note: There are many special activities not listed here because most of them are planned only a week in advance at the Monday Drop-In Centre meeting. For details call the above numbers anytime - or better still - come to the Mon. Drop-In meeting and help plan or suggest activities.

CHRISTMAS PARTY!!!!!!

Tillicum Food Co-op (hosts to such spectacular events as the Halloween Party, and the Kosmic League Wind-up blast) has kindly donated their warehouse for a Christmas wing-ding Saturday December 16. at 1603 Franklin. There will be transportation provided from the drop-in center. Good times start at 8 o'clock sharp. There will be live music (Pearwoody is playing for sure) We're also negotiating with a few other groups--they're locked in the M.P.A. basement, but should weaken and consent soon) /There will also be food and drink. Hopefully we can get some food donations--and we will need VOLUNTEER COOKS AND HELP to set up at the party and also people to clean up afterwards. Has anybody got a good recipe for wine punch? Anyone willing to help contact Patty, Cathy Batton, Kathy Carney or Fran. SEE YA ALL THPRE!!!!!!

PARKS BOARD PASSES pitch and putt golf, skating, swimming, conservatory, etc. Cathy Batton has arranged reduced rate tickets with the Parks Board. The Activities committee will purchase these and make them available to members. If you are interested, contact Cathy or Patty or the Activities Committee which meets 1 p.m. every monday at the drop-in center.

GROUPS-TOM SANDHORN Tom is leading Cathy Batton's group Mondays at 8 o'clock every week at the drop-in center. The first group, true to M.P.A. fashion had more men than women but the second had more ladies. We discussed which type of group we would like (gestalt, encounter etc.) I personally felt good after it was over--its worth going to.

CHRISTMAS GIFT MAKING DAY Every Saturday afternoon until Christmas we are getting together with ourselves and people from the community to make christmas gifts for our friends and families. Arnold came over and brought examples of his stain glass work. People got right into this - some only as far as learning to use the glass cutter while others started on projects. Arnold is available Saturday and Wednesday afternoons for this work. Koko was into a sand candle trip and people did some gorgeous creations with wax, shells and driftwood. Michiko did Japanese paper folding with another group. The mantle was filled with paper birds, pigs, etc. Frans daughter Hilary showed others how to make some fascinating wool freaks, These are big wooly heads with pipe cleaner arms and legs and plasticine hands and feets and noses. Rick and Fran's husband went off to get driftwood for Christmas boxes. These will be ready to put together for our next session on Saturday. Len will help people make hardwood belt buckles during the week. He can't make it on Saturdays. Anyone who has an idea for a Christmas gift we can make is invited to bring samples and material (we'll pay the costs) You can show others how to go about making it.

MOVIES AND FILMS We have 10 free passes a week to Sunday movies at UPC. All you have to do is go to the door, say you're an MPA member, and you'll be admitted free. We're trying to get good films for our Friday nite film sessions. We've just about run out of good ones from the National Film Board, other sources aren't all that good either. The library had old movies (Charlie Chaplin, Mae West, etc.) our excitement was short-lived as the films were silent and small cuts from original movies. We need more people turning out. It's extremely discouraging to show movies to an audience of 2 and then have only 50 percent of the audience like the film. The projectors aren't so good either. Women's Centre got us a film on the womens street gheatre in New York. The showing of Salt of the Earth got fucked up twice. If anybody knows where we can get good movies LET US KNOW, PLEASE!!

MALE-FEMALE DISCUSSION GROUP We've had two male-female discussion groups and are now considering getting a few outsiders to liven things up. The womens centre and the Gay Alliance Toward Equality are possibilities. Anyone knowing of men's lib. groups, let me know. The next group will be held at the East-end house Wednesday Dec. 13th. at 8 o'clock.

POT LUCK SUPPERS The regular pot luck suppers are continuing before each general meeting (The last one had a good variety of food, which preceded the most exciting General Meeting in months.)

BASKETBALL AND VOLLEYBALL These Thursday night activities need a lot more people in order to be successful. The House will continue playing every Thursday--but will not be picking people up at M.P.A. If you want to play, see me and we'll arrange transportation if enough people are interested. its up to you.

FARM TRIP

The trips happen every friday leaving the drop-in center at 9:30. Farm visits for all interested city folk are carried out by means of private vehicles. From five to fifteen people make up the excursions. Usually we take enough food to prepare a meal for all who go and spend several hours working to improve the farm i.e. building a pig pen, making a new cover for the well, etc.

Mike has provided the farm with more than three hundred chickens of which half will begin to lay eggs in the next month and the other half will be slaughtered as broilers. A plot of land has been plowed up in preparation for planting in the spring and we have hopes of acquiring a few pigs and at least one cow in the next month.

3191 W. 10th Ave., Vanc'r 8, B.C.
738-1422



Larry Beckman



Feb/74

Jackie Hooper

BRIEF ON THE NEED FOR AND
ADVANTAGES OF A U.B.C. HALFWAY HOUSE

At a January 1970 meeting of the UBC Board of Governors, approval in principle was given to the idea of a Pilot Project Halfway House to serve Health Sciences Hospital and the Department of Psychiatry. The project was not initiated at that time, but recently a halfway housing group re-activated the idea and is in the process of incorporating as a non-profit society in order to implement the objectives of the earlier proposal. Dr. Andrew Selig, Head of the Health Sciences Centre Hospital Social Work Department is prime mover behind a sizeable committee formed mainly of key people in Health Sciences Hospital care. The committee will be known as the "West Side Society for Adult Rehabilitative Residences".

The Society recognizes the desperate need for housing for patients leaving Health Sciences Hospital resources: in-patient, day care and out-patient services - particularly those patients who require intensive support upon leaving the protective setting of the hospital. Such care in suitable lodgings is not presently available anywhere on the West Side, apart from L.O.M.A. Society's Loma Lodge on West 10th, which houses about 10 ex-patients. Psychiatric boarding homes do exist in the district although they are very few and are custodial rather than therapeutic and thus cannot be considered as a viable resource for the Society's purposes.

At a time when the Foulkes Report has come out strongly demanding that mental patients "be treated in the community rather than in large institutions", our housing committee sees an utter lack of community halfway housing resources, and views hospital re-admission rates with great concern. (See attached sheet on re-admissions.)

Housing for the emotionally ill and convalescent must cover a wide range of needs ranging through in-patient hospital care; day hospital care; highly supportive halfway house care; less supportive halfway house care (such as the five houses run by Mental Patients Association presently accommodating about 50 ex-patients, plus a waiting list); minimally supportive apartment-block living presently being initiated by the Coast Foundation Society in accord with recommendations of the Cumming Report, and finally - housing in the community at large. Only through provision of services leading step by step towards re-entry into the community will hospital re-admission rates drop to a reasonable level.

In what way can UBC fill the gap in UBC-operated psychiatric services?

- a) Assign to the HSC housing society a halfway house on or near campus: ideally a fraternity house near HSC hospital. A fraternity house is already tailor-made to serve ex-patient needs for a group living arrangement, complete with bedrooms, kitchen, laundry, large lounge areas, etc.
- b) Community services are within walking distance of the fraternity houses: shopping, good bus service, proximity to hospital and out-

patient services, proximity to inexpensive eateries like S.U.B.; proximity to recreational, cultural, and scenic attractions unrivalled elsewhere in Vancouver.

Apart from the physically attractive features of such a structure, and the fact that assignment of a fraternity house to this project would allow the project to be economically feasible (with input from the Community Care Services Society which would provide per diem support for each resident), a considerable educational potential exists in this project for a number of UBC departments.

a) The Departments of Social Work and Psychology could, on a rotating basis, give students, particularly those interested in a career in mental health, considerable educational experience in the reality situation of a halfway house.

b) The Department of Nursing, and Occupational Therapy students, could provide input in the form of in-service training, hopefully for academic credit.

c) The Department of Home Economics could use the halfway house as a training ground for planning large-scale meals; helping residents in economy-conscious shopping, etc. Many male ex-patients have few survival skills in the areas of shopping and food preparation, even though a large percentage of them may have to get by on welfare payments for months or years to come. Students who could suggest adequate, nutritional menus and train residents in basic cookery would be an invaluable input to the program.

d) The Department of Medicine, i.e., medical students, psychiatric residents, etc. could serve on a rotating basis in the halfway house as part of their training. Both Loma Society and Mental Patients Association facilities have accommodated in-service trainees in 1973.

e) The Department of Physical Education could involve their students in recreation projects for residents of the house, organizing and leading group activities so necessary to the physical well-being of ex-patients who tend to neglect their physical health.

We see the following people as particularly needy potential candidates for the halfway house:

a) In split families, an estranged wife or husband often has no place to go on leaving hospital, nor any immediate housing plans.

b) Single men and women who were living in emotionally upsetting family environments desperately need an alternative for a time: a breathing space before making permanent plans.

c) Single people living alone at the time of hospitalization are all too often re-admitted because of loneliness and a return of their acute symptoms, especially in the vulnerable state in which

they find themselves upon leaving the supportive atmosphere of full-time or day hospital.

d) Although Hospital Day Care, Dr. Knobloch's Day Care program, HSC outpatient clinic and aftercare groups do provide emotional support; those who leave these programs are frequently re-admitted to hospital because of lack of suitable housing. All too often ex-patients end up in lonely hotel rooms, inadequate housekeeping rooms, basement suites in unlovely surroundings. The shortage of all housing in U.E.L. and in Vancouver is well-known and well-documented, and bright cheery accommodation for singles is practically unknown on the West Side at rates indigent ex-patients can afford.

To close: UBC has earned an international reputation for its innovative and progressive programs in student housing, and child care facilities. Nowhere in North America was post-war housing for student "veterans" so readily available as at UBC. Housing such as that outlined above for UBC's ex-mental patients would be another first for the university.

We see the UBC halfway house as being a quite intensively supportive house, helped along with input from the faculties mentioned earlier. It would provide a group living experience for people suffering through a painful process of change and adjustment. It would, hopefully, provide a primary support group for alienated people, and prepare them for another step on their way back into the community.

Riverview Hospital finances three halfway houses in the city. Their services and budgeting will be studied by our Society. Private groups have tried and often failed in the past to provide suitable halfway house accommodation. To buy the equivalent of a fraternity house on the open market through CMHC funding is a possibility, but almost prohibitively expensive, as several members of our committee know only too well. Professional 24 hour staffing, food and program costs, in addition to carrying a heavy mortgage is exceedingly difficult. For example, Loma Lodge recently acquired the services of six L.I.P. workers in order to supplement their small under-paid staff, help in their rehabilitative program and fill in night shifts. Unfortunately, LIP funding is notoriously unreliable since it cannot be counted on to continue over a lengthy period.

We see a UBC-allocated fraternity house as the only viable alternative to fill a need that grows more acute by the day. Without the constant worry of having to trim essential costs to meet high principal, interest and tax payments, our group could use all funding received through Community Care Services - a per diem rate for each resident - for usual operating expenses such as utilities; proper staffing with good working conditions for the staff; nutritious meals; and a progressive and innovative therapeutic program, involving UBC departments as much as possible.

PSYCHIATRIC READMISSIONS

1972
Vancouver General Hospital in-patients,
psychiatric wards (excluding emergency)
Total.....730
Readmissions....392
% Readmissions.....53.7%
(according to Medical Records librarian,
Mrs. Peters, and okayed by Dr. Margetts)

1971
Riverview Hospital in-patients
(Mental Health Branch Statistical Report)
Readmissions.....62.1%
(Guesstimate, 1972, according to Mr.
Bob Ross, Social Work Supervisor).....60%

*1972
Health Sciences Centre Hospital, U.B.C.
in-patients only. Readmission.....61%
(According to Medical Records, Mrs.
Taggart; 228-2361)

obtained by J. Hooper, B.L.S.
August, 1973.

AGENDA

MPA SPECIAL ELECTION MEETING, ^{May} JUNE 26, 1972

1. Cook's salary.

Candidates

2. Treasurer

- David Moses ✓
- Gerry Walker ✓

3. Administrative Coordinators (Two)

- Lanny Beckman ✓
- Barry Coull ✓
- David Moses ✓

4. East End Center Coordinator

- Francis Phillips ✓

5. West End Center Coordinator

- John Butler ✓
- Jim James ✓
- Tom Linnman ✓

6. Activity & Crafts Coordinator

- Coco ✓
- Cindy Creemer ✓
- Mike DuBelko ✓
- ~~Esther Heyen~~
- Lawrence Krane ✓
- Glen Underwood ✓

7. Secretary

- Cindy Creemer ✓
- Ursula Honold ✓
- Judy LeClair ✓
- Dianne Lousley ✓

8. Drop-in Center Coordinators (Two)

- Grace Risson ✓
- Kathy Carney ✓
- Tony Diakos ✓
- Leslie McLeod ✓
- Ian Robertson ✓
- Ed Stanton ✓

9. Farm Coordinators (Two)

- ~~Dianne Carver~~ ✓
- Dianne Carver ✓
- ~~Tony Diakos~~
- Lloyd Howarth ✓
- Mike Musclow ✓
- Marc Young ✓
- Rolly Haggland ✓

10. Floating Coordinators (Three)

- Janet Bell ✓
- John Butler ✓
- ~~Dianne Carver~~ ✓
- Franc David ✓
- John Drake ✓
- Futh Dworkin ✓
- Judy Farkas ✓
- Ursula Honold ✓
- ~~Leslie McLeod~~ ✓
- Dave Patterson ✓
- Ian Robertson ✓
- Glen Underwood ✓



*Wtg tomorrow
Donner - how select
Rad. Therapists*

VOLUNTEER'S LIST OF MPA ACTIVITIES

This is a fairly complete list of MPA activities. When people first contact MPA, let them know some of the things they can get involved in here. Don't flood them with all this information at once. At first, just tell them about a few of the activities and mention the rest naturally in the course of a longer conversation.

- ✓ 1. Drop-in Center. Open 24 hours a day. Social activity during the day and evening: talking, drinking coffee, table games etc.
- ✓ 2. Crisis Center. Upset people can talk to others who are understanding. There are 12 beds for people to stay over for short periods of time during a crisis.
- ✓ 3. Half-way House. People coming out of hospital can live here while looking for a permanent place to live.
- ✓ 4. Crafts Workshop. A full program of crafts will be available, including macrame, batik, silkscreen, leatherwork, ceramics, weaving, painting, woodwork, pottery, tie-dye, sculpture etc.
- ✓ 5. Research. A group of people are reading material about the mental health situation in B.C. in order to educate ourselves and the public about the need for better mental health facilities.
6. Farm. MPA has a farmhouse and 28 acres of land near Matsqui to be used as a half-way house for disturbed people who want to live in the country.
- ✓ 7. Sports. We have the use of a gym one night a week, are forming a softball team, re-organizing our yoga program etc.
- ✓ 8. Therapy groups. Gestalt, sensitivity and encounter groups will be held fairly regularly.
9. Vancouver Opportunities Program. People on welfare can receive an extra \$50 per month for working 30 hours per month with MPA.
10. Kitchen Work. People can get involved in all aspects of helping out in the kitchen. We serve 3 meals a day.
11. Office Work. Typing, correspondence, working on the newsletter etc.
12. Gardening. Here and at the farm.
- ✓ 13. Videotape Training Program. Inner City is teaching interested MPA people how to use videotape and to make TV programs for local channels.
14. Outtings. Picnics at the farm; beach parties etc.
- ✓ 15. Housing Committee. This committee is designed to help people find housing (communal or otherwise), help them find furniture, move in, deal with daily problems of living etc.

Newsletter

.....2



16. Meetings. Held about every third Friday night.

17. Other Activities. Play readings, yoga lessons, poetry recitals, guest speakers etc.

18. Volunteers. People can volunteer as much time as they like to being at MPA to talk on the phone and in person with lonely and disturbed people.

A VERY BRIEF GUIDE FOR VOLUNTEERS ON HOW TO RELATE TO PEOPLE
WHO CONTACT MPA FOR HELP

Emphasize that MPA is a non-professional group run mostly by ex-mental patients. The people here understand from personal experience about emotional problems and are very accepting of people who are upset, lonely, depressed, anxious etc.

MPA Center is an open house; everyone is welcome; there are very few rules here and people are free to do just about anything they want.

Invite people who phone to drop around. Make them feel that the atmosphere here is very unthreatening.

When people come over, make them feel welcome. Offer them coffee, show them through the house and find a quiet spot where you can talk.

If people say they feel like outsiders to the group, re-assure them that everyone felt that way at first, but that after a short time people begin to feel that they belong to the group.

When a person comes to the house, talk with him or her for quite a while. Especially when the person's life seems empty, try to interest him or her in MPA Activities (see attached list). Don't make our program sound fixed and rigid. Let the person know that if there's something new he'd like to initiate here, he can do it and that we like people to begin new activities.

Remember, when you're not sure what to do, consult other volunteers and people around the house. You're not working alone. Try to feel that you're part of a team. Especially on important decisions, like helping someone get into hospital, consult with others.

When someone who is upset would like to live here and you think it would be a good idea, consult with someone here (probably Barry or Lanny). Make sure the upset person knows that this is not a permanent residence, but make it clear that the Housing Committee will help him a place to live after a short stay (at most a month) here.

You'll pick up most of what you have to know as a volunteer when you're actually working here. Share your knowledge with others and get them to share theirs with you.

The house rules are posted on the bulletin board by the front door. Familiarize yourself with them.

NOTES FOR VOLUNTEERS ON USING THE REFERENCE CARD FILE

The card file is located on top of the filing cabinet to the right of the desk in the basement. Often people will contact us for information and the card file will be helpful. You'll probably find that when you're doing your shift you'll come across new pieces of information. Please write each new reference on a blank card and add it to the file.

The more experience you have as a volunteer, the more confidently you'll be able to use the file. When you're not sure where to refer a person, let him know that you're not sure. Don't give people false hopes about getting help. There are a number of cards in the file on other information Centers. Refer people to one of these phone numbers when you're not sure exactly where else to refer them.

Up to now, these are the categories we have in the file. (Spend some time on your shift looking through the file to familiarize yourself with it. If you have some ideas about how the file can be better organized, talk about it with some other people and do it.)

AGENCIES - RELATED

- Children
- Crisis and Counselling
- General
- Housing
- Information
- Legal
- Medical
- Welfare and Work

HOSPITALS AND HEALTH SERVICES

MEMBERSHIP

- All members
- Transportation Committee (for emergency rides)

THERAPISTS - INSTITUTIONS

THERAPISTS - PRIVATE

Drop-in Centre MComittee Meeting March 12, 1973

We discussed many things at the meeting, a few of which were not totally concerned with the drop-in centre.

We felt that more drop-in centre activities should happen at the residences and that more attempts should be made to involve people at the residences in MPA happenings. This is especially true of the Farm. At the same time we feel that the residences should become more aware of being MPA residences and not just places to live.

We recommend that all General Meetings be held at the West Residence.

That Politics Night continue on Thursday night, but that a monthly Research and Political Report meeting be held monthly. At this meeting a general discussion about MPA's Political activities with the membership could occur.

This Saturday at 2:00 a puppet show will happen at the DIC.

A problems with drinking group will be held at 8:00 Tuesday nights at Joe McCarthy's house on 11th. Rollie will put up signs announcing the address or call Joe at 733-4834.

Clayton will help with a weekly dinner and he will conduct a weekly Religious discussion group.

Gerald will start a weekly movie cutting and look into free movies.

We have a tax cabin in the mountains (Hollyburn) for the weekend of April 7th. We will buy food and ask for some money from people who can afford it. We will pack in.

we
On March 31st we will have our second anniversary party at the Alex Neighbor house from 7:00 P.M. to 1:00 A.M.

This Wednesday noon we will have an activities meeting to review the whole activities meeting.

Kathy Batten will contact a piano tuner.

Clayton will do a lunch for next Mondays' DIC meeting.

We had an ~~amazing~~ immensely successful VOP meeting. We worked out a lot of the difficulties in the program. We made up some tentative schedules, exchanged some ideas and had a good time and some donuts and bread muffins. We will have another meeting next Monday at 2:00 to complete the VOP schedules and eat some more donuts.

MPA is a democratic group. Everyone has an equal say in how things are run. When hassles come up they are discussed in meetings and decisions are voted upon. The majority rules.

This is not a hospital. We are not professionals and MPA does not take responsibility for you as hospitals do. When you come here you join MPA as an equal member and you are expected to take responsibility for yourself, for your money, pills etc. We are not a parental institution.

MPA is a place where people can get together as equals. MPA is not a consulting agency. (If you find help here, which we hope you will, the help is from people, not from MPA. If you get hurt here, which we hope you won't, it is by people, not by MPA.)

MPA doesn't have, and doesn't want, the legal authority to take charge of anyone's life. If you want to share responsibility for your life and other people's MPA is a place where that can happen. MPA's refusal to take responsibility for the lives of individuals is not just a legal necessity to protect the group. It is a basic part of the philosophy of MPA.

This is a place where you can find friendship, understanding and love, where you can join together with equals to build a community for people who are upset and alone.

People are available to help with day-to-day problems, companionship, welfare, DUC, somewhere to live, looking for jobs, getting into activities, and discussion. We have volunteers, coordinators and our members as helpers.

Persons referred to residences must be willing and able to participate in communal living and sharing the responsibilities such as: cooking, housecleaning, shopping, and participating in MPA activities.

They are first referred to the Residence Referral Co-ordinator. If in town will refer them to the House Co-ordinator whose house has available beds.

The referred person is expected to visit the house he is referred to at least once and attend at least one meeting held by such house. This gives the person a chance to get to know the people of the house, and they get to know the referred person.

There aren't many rules here. The most important ones are:

- 1) NO PHYSICAL VIOLENCE ON THE GROUNDS OR IN THE HOUSE AT ANY TIME.
- 2) NO ALCOHOL OR UNPRESCRIBED DRUGS ON THE GROUNDS OR IN THE HOUSE AT ANY TIME.
- 3) NO INTERFERING WITH THE PEACEFUL ACTIVITIES OF OTHER PEOPLE.
- 4) NO EXCHANGING OF PRESCRIBED PILLS BETWEEN PEOPLE IN THE HOUSE.

Each house has co-ordinators to help set them on their own and assist in emergency cases.

Each house is subsidized a certain amount of money for emergency funding.

Transportation is provided to and from MPA activities; everyone is welcome to participate.

Weekly farm trips for anyone interested in visiting; the farm Fridays at 10:00 A.M. and other interesting trips.

Smiles and everyone welcome to MPA, the More the Merrier!!!

Please note: Houses, when full, are self-supporting as far as finances are concerned. However MPA helps with the initial cost of setting up new houses.

Residence Referral Co-ordinator can be reached at 738-5177 or 738-1422. If not available at drop-in centre please leave message with name and number where you can be reached.

Residence Referral Co-ordinators can be reached at

738-5177

738-5178

- Drop-in Centre - 1982 W. 6th Ave., Van.
- Farm - 26942 108th Ave., Whonnock B.C.
- East End Residence - 369 East 21st Ave., Van.
- West End Residence - 1754 W. 11th Ave., Van.

Love & Peace

Paule LaFreniere
Residence Referral Co-ordinator

P.S. If not available ask for Fran Phillips.

SALARY COMMITTEE
January 14, 1974

Present situation:

<u>Coordinator</u>	<u>Weekly salary</u>	<u># Dependts</u>	<u>Coord's</u>	<u>Weekly Salary</u>	<u># Dep's</u>	
Beckman	\$100.00	0	With no dep's	\$97.50	0	
Blackstock	"	0		Betts	119.54	1
Chamberlin	"	0		Kuenzli	119.54	1
Coull	"	0		Linklater	119.54	1
Lorimer	"	0		Mullens	119.54	1
McManus	"	0		Persky	119.54	1
Palmøer	"	0		Phillips	178.16	4
Pelzman	"	0		Servant	139.08	2
D. Smith	"	0				
N. Smith	"	0				
Stewart	"	0				
Walker	"	0				
Betts	\$125.00	1				
Kuenzli	"	1				
Linklater	"	1				
Mullens	"	1				
Persky	"	1				
Phillips	"	4				
Servant	"	2				
(4 positions unfilled)						

Note that in this plan, all but 2 coordinators take a cut and 2 receive more.

Plan 2: Simply divide the \$175 per week allotted for coordinators with dependents (\$25 x 7). As there are a total of 11 dependents, each would receive \$15.91 (\$175 divided by 11). The salary scale would be:

<u>Coord's</u>	<u>Weekly Salary</u>	<u># Dep's</u>
With no dep's	\$100.00	0
Betts	115.91	1
Kuenzli	115.91	1
Linklater	115.91	1
Mullens	115.91	1
Persky	115.91	1
Phillips	163.64	4
Servant	131.82	2

Note that in this plan 5 coordinators take a cut and 2 receive more.

Plan 3: Same as Plan 2, but personal circumstances are taken into account. Namely, Linklater and Mullens stay at \$125 per week since each is supporting a dependent child living with them. Divide the remaining \$125 by 9 dependents = \$13.88. This salary scale would be:

<u>Coord's</u>	<u>Weekly Salary</u>	<u># Dep's</u>
With no dep's	\$100.00	0
Betts	113.88	1
Kuenzli	113.88	1
Linklater	125.00	1
Mullens	125.00	1
Persky	113.88	1
Phillips	155.52	4
Servant	127.76	2

Note that 3 Co's get less, 2 get more.

MPA receives 23 salaries (20 from LEAP, 2 from CYC and 1 from BC Gov't). Salary income is for 16 positions for coordinators with zero dependents at \$100 per week and 7 for coordinators with some dependents at \$125 per week. Concern has been expressed that it is unfair to have only one income level for coordinators with dependents, no matter how many dependents they have. It is felt that the salary level should take into account the number of dependents and personal circumstances.

Here are some possible plans to make the salary scale fairer. (all plans involve not exceeding the present income for salaries.)

Plan 1: Each coordinator without dependents would take a cut of \$2.50 per week in gross salary and this amount of \$40 (\$2.50 x 16) would be added to the \$175 of extra weekly salary for coordinators with dependents (\$25 x 7). This total amount would be divided proportionately according to the number of dependents. Each dependent would be allotted \$19.54 (\$175 plus \$40 divided by 11--the number of dependents).

The salary scale would be:

FLIPLEY'S BELIEVE IT OR NOT!

A. ADMISSIONS-EXPECTATIONS-IN CANADA

1. In 1965 there were 222,400 males born in Canada. 16.1% of these or 35,806 people would be expected to be admitted to a mental hospital at least once during their lives.
2. Of the estimated number of 19,644,000 persons (9,879,200 males, 9,764,800 females) living in Canada in 1965, 2,394,804 (1,256,925 males, 1,137,984 females) would be expected to be admitted to a psychiatric institution at least once in their lives.
3. Expected Admissions by Age, 1965 (All Diagnoses)

Males

At Birth - 16.1% or 35,806 people
Age 20 - 15.6% or 23,634 people
Age 40 - 10.8% or 13,871 people
Age 60 - 5.5% or 3,843 people

Females

At Birth - 15.1% or 31,801 people
Age 20 - 14.5% or 21,408 people
Age 40 - 9.6% or 12,394 people
Age 60 - 5.5% or 3,814 people

B. FACILITIES

1. There are about 3-5% more "patients on books" than there are psychiatric beds in Canada.
2. There were 21.8 millions patients-days of care in mental hospitals in Canada during 1970. Of these 1,031,652 were for psych. units and 780,812 were for public mental hospitals.
3. In 1970 the total reported operating revenue for public mental health facilities was \$396.1 million. Of this the provinces paid 89.8% while the federal government paid 0.1% so we needn't be too grateful for the LEAP grant.
4. Costs per day for a psych hospital in Canada averaged out to \$46.89 per day and \$20.12 per day for a public mental hospital in Canada in 1970.

August 16th, 1972

SOME THOUGHTS

Lotsa Programs and No People

This letter is a group effort and

that is a positive statement about it. From talks with residents, coordinators and volunteers I have gotten the feeling that we must get more together, if only to discover what each other is doing; thereby being more of a resource person for others, also letting yourself and others know various places where they can feel

most able to contribute what they can or plug themselves in (to what they will be able to see happening)

Do you really know of many of the projects which various persons have happening, would like to see happen at the different M.P.A. locales? These projects would happen sooner or better if more of the people put more energy into them or maybe not happen at all if nobody shows an interest.

Being around M.P.A. involves putting in a lot of one's own personal energy into this place and its people, looking for loose ends to tie up and a willingness to leave yourself open to persons who want help, or, anything, from YOU. If you find that the load is getting to be too much, going to someone else and letting them know that you need some of THEIR time and energy. We are not able to really help others by having a few of the people take on the big job of working (i.e. Inter-relating) with people and then getting negligible support from the rest of our elected persons. (This can and does apply equally as well with working inter-relationships among volunteer staff, V.O.P.'s residents, drop-ins or others.

This is basic survival for any organization, and is an especially relevant awareness for M.P.A., as we are an alternative to established methods of people-oriented thinking.

I have learned from talking with and being with residents of M.P.A. houses that they feel estranged from the elected people who work at M.P.A. There is also a feeling of not being wanted or needed by the rest of this organization.

I find that I have been better able to work with residents, drop-ins, co-ordinators or volunteers when I have the opportunity to know them personally and I can do this by being where these other persons are, and also by leaving myself open to what another person has to offer. I would like to see the isolationism disappear; so would the majority of persons with whom I have discussed this matter. It will not disappear until we have more co-ordinator support with our plans and projects if we want them to succeed. i.e. Have persons know about plans and projects which are happening, and ALSO ideas on how to follow up announcements and meetings for projects with concrete developments. Such as how do people feel about your project, how do you feel about these feelings, how are people to get to and from your project. Do people spontaneously respond to what you do when you are "doing your thing", do you spontaneously respond to other people with whom you are finding yourself working or doing M.P.A. things?

This all reads very accusatorily and I want to put that feeling across ±\$#%¢\$&

I personally have seen places for changes within this organization, but we will not ever find ways to implement changes that we collectively want, if we do not involve ourselves more completely in other aspects of M.P.A. besides those we are in contact with during our day-to-day work.

The foregoing are thoughts by Franc David, M.P.A. co-ordinator

MPA RE-ORGANIZATION CONFERENCE

Oct. 10th-15th, 1972

TOPICS SUBMITTED

SPECIFIC TOPICS

- Welfare (help with)
- Announcements of meetings
- Crisis Service
- Newspaper
- Community Integration
- Day Care Service
- Women (program for)
- Membership integration
- Transportation Service & Co-ord.
- Maintenance Service & Co-ord.
- Over 30's Program
- Housewives Program
- Hospital Visits
- Adolescent Program
- Method of Review of MPA Co-ords.
- Organizing patients in Hospitals
- Communications activities for internal & external use (newsletter, home news)
- Newspaper Committee- cell group to run it
- Sports
- can a Crafts Program really work at MPA
- Public Relations
- Politics Night
- Jobs
- Research
- Office
- Administration
- Newsletter
- Farm
- Finance
- VOP & Volunteers
- Bus Passes
- Proposals to New Government
- increased cooperation with Forensic Clinic (Bob Whitlaw)

GENERAL TOPICS

- Constitution
- War between "people-people" & "business people"
- Discussion of positive & negative aspect of structure. Modify structure to emphasise positive aspects
- Direction of MPA
- No organized manipulation by plastic hip socialists
- Dividing MPA into cell groups involving members & co-ords. in business & encounter activities
- Definition of Co-ordinators jobs
- Discussion of new structure to redistribute power in MPA

RECOMMENDATIONS WITHIN THE NEW STRUCTURE

1. Groups should go to the Business Meeting with all new, different proposals which are long range or beyond the groups budget.
2. The group and the business meeting should work together to develop mutually acceptable proposal which the group then takes to the General Meeting.
3. If a group's proposal can't be worked out and accepted by the Business Meeting the group may take it directly to the General Meeting.
4. Each group should present a dittoed budget request for a regular monthly budget to the Finance Group, then to the Business Meeting and then to the General Meeting.
5. The Finance, Elections, Housing and Telephone Groups should not require budgets.
6. Once the regular budgets are established, special proposals should be dittoed and distributed to everyone before the Business Meeting so people will have time to review them.
7. Group proposals should be first on the agenda of Business Meetings.
8. The Finance Group should publish a regular financial statement every month and a statement of the Group's expenditures every 3 months.
9. A Vancouver Opportunities pool should be established and should elect a representative who will be responsible for placement of people within the pool.
10. Groups should involve people in:
 - Activities
 - Crafts
 - Cleaning, Decorating and Repairs
 - Community Integration
 - Drop-in center
 - East End
 - West End
 - Elections
 - Farm
 - Library
 - Membership Integration
 - Newspaper
 - Office
 - Political Legal Action
 - Telephoning
 - Transportation
 - ~~Risk~~ Finance
 - Housing

RECOMMENDATIONS MADE ON THE JOB POSITIONS FOR THE PROPOSED STRUCTURE of MPA
from General Meetings held Oct. 18th and 25th.

recommended: that:

- that the floating co-ordinators be dropped and assigned to the Drop-In Centre and the residences/one co-ord to each place
- that the residences ratify the choice of the co-ordinator that will be assigned to their house.
- that for the moment we have one Farm co-ordinator and a thorough farm discussion be held at a General Meeting with Mike present.
- that there be 3 Drop-In co-ords to handle the various duties at the Drop-In Centre, specifically VOP's, volunteers, activities and drop-ins.
- that the Crafts position be one revolving around the practical needs of the Drop-In Centre, the residences and the membership, and would function jointly with these co-ordinators.
- that we have a secretary
- that we have a treasurer
- that we create a transport co-ordinator position.
- that we have 2 Political Action co-ordinators who will
 - a) continue research
 - b) implement completed brief and re-written Mental Health Act at government level
 - c) contact general public, agencies, others working in this area
 - d) publicize work being done or contemplated to members & general public
 - e) develop new projects in this field
 - f) organize Politics Night
- that we have a Newspaper & Communication Co-ordinator who will
 - a) co-ordinate both a newsletter & home news on a regular basis
 - b) maintain internal communication with co-ords & members
 - c) be responsible for increased publication & circulation
- that we have 2 Community co-ordinators, one who will
 - a) involve MPA with other self-help groups -- joint activities & programs
 - b) stimulate social happenings between MPA & other community groups; contact police hospitals, liberation groups.

Organize P.R., political activity; help organize Politics Night

and one who will be responsible for

 - a) grants, house purchasing, government contact, political P.R.
 - b) work in conjunction with other Community co-ord
- that we have a Membership co-ordinator who will
 - a) organize a group to go out & meet active & inactive members for the purpose of re-involvement in MPA
 - b) organize visits to people in hospitals
 - c) concentrate on people over 30.
- that all co-ordinators work with VOP's and volunteers in their particular area

RECOMMENDATIONS FROM GENERAL MEETING, OCTOBER 18th

Recommended:

-that the floating co-ordinators be dropped and ~~one~~ be assigned to ~~one~~ the residences, and the drop-in centre/one co-ordinator to each place.

-that the residences ratify the choice of the co-ordinator that will be assigned to their house.

-that for the moment we have one Farm co-ord. and a thorough Farm discussion be held at a General Meeting with Mike present.

-that there be 3 Drop-In co-ords. to handle the various duties at the Drop-In Centre, specifically VOPs, volunteers, activities and drop-ins.

-that the Crafts position be one revolving around the practical needs of the Drop-In Centre, the residences and the membership, and would function jointly with these co-ords.

-that we have a secretary

-that we have a treasurer

-that we create a transport co-ordinator position.

MPA RE-ORGANIZATION CONFERENCE
Oct. 14th-15th, 1972

JOBS

RESPONSIBILITIES

2	Drop-In Centre Co-ordinators (Kathy Carney & formerly Tony Diakos)	-VOP; volunteers & scheduling; activities; relating to drop-ins
1	Crafts (Koko)	-crafts activities with members at all 3 centres
2	Administrative Co-ordinators (Lanny & Barry)	-funding; reports; PR; internal planning; political activity; newsletter; house purchasing; budgeting; research
1	Office Co-ordinator (Laura)	-typing; taking minutes; files - secretarial work
1	Treasurer (Gerry)	-budgeting; book keeping; petty cash; banking; relating to people
1	Farm Co-ordinator (Mike Masclow)	-develop rural residential program; develop community support; relate to people; develop physical facility
1	West End Residence Co-ordinator (Dick Woodsworth)	-relate to people thru activities of daily living; crisis work; contacts with agencies; PR; house & MPA budgeting; housing
1	East End Residence Co-ordinator (Fran)	-same as WE Co-ord
3	Floating Co-ordinators (Janet, Franc and formerly Ursula)	-assist East, West & Drop-In Co-ords with anything & everything - undefined jobs; encourage contact among people in different MPA centres
2	Research (Dick Betts & Gerald)	-research of legal & Mental Health issues; rewriting of Mental Health Act; promote legislative change

RECOMMENDATIONS ON PROPOSED STRUCTURE PLAN

from Special General Meeting held Oct. 18th, 25th and Nov. 1st.

Recommended

-that we have the following 19 positions

- 2 East End Co-ords
- 2 West End Co-ords
- 3 Drop-In
- 1 Para
- 1 Crafts
- 1 Office
- 1 Treasury
- 1 Transport
- 2 Political Action
- 1 Newspaper & Communication
- 1 Membership
- 1 Library
- 2 Community

-that all co-ordinators work with VOPs and volunteers in their particular area

-that the residences ratify the choice of the co-ordinator that will be assigned to their house.

-that the Drop-In Co-ordinators carry on working with the present volunteers and over an extended period of time try to increase the number

-that each small group send a representative to the Finance Meeting making budgetary requests and that Garry (and whoever makes up the Finance Group) work up an overall budget to bring to the General Meeting

-that we apply to LIP for 15 salaries

ADMINISTRATION

1. Eliminate the term administrators from the title of the co-ordinators.
2. Control of the newspaper should be diffused and the center more representative.
3. Procedures of funding all activities and committees should be put in writing and posted for all members to read.
4. There should be much wider participation in the planning of public relations.
5. Control from the top should be limited; all groups should accept help & be involved in decision making. (the creation of an administrative committee?)
6. The jobs should be allocated in relation to the abilities and the personalities of the individuals rather than the other way around.
7. There should be a review of Barb's status.

ARTS & CRAFTS

1. There is not enough going on.
2. It is the responsibility of the East & West End residences to generate their own interests.
3. People should be motivated not forced.
4. People from the general community should be involved in these programs.
5. A music program should be created and instruments purchased.
6. Programs should be more widely and effectively advertised.
7. Some of the crafts areas should be converted to activities such as pool and/or ping pong.
8. Koko is a spinny broad but does a good job

EAST AND WEST CO-ORDINATORS

1. Their roles should be redefined in regard to their relationship to M.P.A. as a whole.
2. There should be two co-ordinators for each center.
3. The function of the co-ordinators is not to solve people's problems but to act as resource persons in encouraging participation in M.P.A. activities and association with the general community.

OFFICE CO-ORDINATORS

1. The person in question should benefit all co-ordinators, rather than being the personal secretary of any particular individual.

ARTS & CRAFTS

1. There is not enough going on.
2. It is the responsibility of the East & West End residences to generate their own interests.
3. People should be motivated not forced.
4. People from the general community should be involved in these programs.
5. A music program should be created and instruments purchased.
6. Programs should be more widely and effectively advertised.
7. Some of the crafts areas should be converted to activities such as pool and/or ping pong.
8. Koko is a spinny broad but does a good job

EAST AND WEST CO-ORDINATORS

1. Their roles should be redefined in regard to their relationship to M.P.A. as a whole.
2. There should be two co-ordinators for each center.
3. The function of the co-ordinators is not to solve people's problems but to act as resource persons in encouraging participation in M.P.A. activities and association with the general community.

OFFICE CO-ORDINATORS

1. The person in question should be fit all co-ordinators rather than being the personal secretary of any particular individual.
2. They should be given more assistance.
3. They could lessen their work load by spreading out the burden of responsibility to others.

RECOMMENDATIONS OF DISCUSSION GROUPS

1 THE DROP-IN CENTRE

- 1 On any particular project there should be a co-ordinator, a V.O.P. person and a volunteer to aid in diffusion of responsibility and increased participation.
- 2 replacement training should be instituted for all job functions.
- 3 the Drop-in House should be decorated.
- 4 limitations should be placed on the activities of individual co-ordinators
- 5 in performing any job or organizing any activity as many people should be involved as possible.
- 6 More volunteers should be recruited and better use made of those already available.
7. There must be co-ordinators in the evenings.
8. Activities should be co-ordinated with East and West End Residences and with the community.
9. There must be scheduling of jobs so that interested and available persons have things waiting for them to do when they come in.
10. There is a need for a separate crisis house operated around the clock by paid and trained persons.

2 RESEARCH

1. The present work of this committee should be continued but with increased communication with both the membership and the community in terms of the preparation and the dissemination of the information compiled (perhaps in the form of booklets of general interest and appeal).
2. the creation of cell groups for the purpose of detailed discussion of issues raised by the research group.
3. There is a need for research into the gradual transition from welfare to self-employment; also for recommendations in this regard.
4. There must be more members involved in the research and attention given to its relationship to political action.

C. COMMUNITY CONTACT COMMITTEE

1. Two Political Action coordinators assisted by volunteers will carry on their present projects:
 - (a) Continuing research.
 - (b) Implementation of completed brief and re-written Mental Health Act at government level.
 - (c) Contacting General public, agencies, others working in this area.
 - (d) Publicizing work being done or contemplated to members and general public.
 - (e) Develop new projects in this field.
2. One Newspaper and Communication Coordinator will be assisted by V.O.P. and volunteers and will:
 - (a) Coordinate both a newsletter and home news on a regular basis.
 - (b) Maintain internal communication with coordinators and members.
 - (c) Make contacts with community at large.
3. One Community Integration Coordinator will:
 - (a) involve M.P.A. with other self-help groups -- joint activities and programs.
 - (b) Stimulate social happenings between M.P.A. and community groups.
4. One Membership Integration Coordinator will be assisted by volunteers and will:
 - (a) Organize a group to go out and meet active and inactive members for the purpose of reinvolvement in M.P.A.

ALL COORDINATORS WILL:

1. Attend meetings in their designated interest areas.
2. Serve on the Coordinating Committee when required.
3. Attend General Meetings.
4. Write a monthly report of activities and plans.
5. Be available to write for grants and make monthly reports to funding agencies.

STRUCTURING OF M.P.A.

A. PROGRAMS COMMITTEE.

1. Two Drop-in Center Coordinators will be assisted by V.O.P. and volunteers and will:
 - (a) organize V.O.P. personnel to work with all coordinators.
 - (b) Arrange volunteer program and scheduling.
 - (c) Make personal contact with all drop-ins.
 - (d) Do nothing else.
2. One Activities Coordinator will be assisted by V.O.P. and volunteers and will:
 - (a) Organize activities with activity committee.
 - (b) Coordinate activity committee.
 - (c) Cooperate with residence activities.
 - (d) relate to drop-in people.
3. One Crafts Coordinator will be assisted by V.O.P. and volunteers and will:
 - (a) Advertise for community people to participate on a cost paying basis.
 - (b) Take craft activities regularly to all M.P.A. locations.
 - (c) Provide facilities, either mobile or complete at each location.
 - (d) Devise flexible program to meet personal needs and M.P.A. community needs.
4. Residence Coordinators -- East 2, West 2, Farm 1, will be assisted by V.O.P. and volunteers. Both house coordinators will share in the following:
 - (a) Work with house members re new members, budgeting, adjusting to communal living.
 - (b) Be a resource person re crisis problems, welfare and agencies
 - (c) Assist house with integration in M.P.A. programs (Farm integrates in own community).
 - (d) Develop new ways of approaching problems of loneliness and isolation among members.
 - (e) Farm coordinator will carry out all above activities that he considers relevant.

B. OFFICE COMMITTEE.

1. Secretary, assisted by V.O.P. will:
 - (a) Be accessible to all coordinators for typing reports, letters, etc.
 - (b) Keep files re M.P.A. business, M.P.A. phone numbers, organizations and helpful professionals.
 - (c) Be familiar with what's happening in committees
 - (d) Be a resource person to coordinators re meetings, activities.
2. Treasurer will:
 - (a) handle payroll
 - (b) handle petty cash.
 - (c) Keep books
 - (d) Be a resource person for budgeting.
3. One maintenance coordinator will be assist by V.O.P. and volunteers and will:
 - (a) Organize general cleaning at drop-in.
 - (b) Organize clean-up crew for special occasions.
 - (c) Do general repairs.
 - (d) Work with volunteers if special repairs needed.
4. Library will be staffed by volunteers and will:

- (b) Make craft activities regularly to all M.P.A. locations.
 - (c) Provide facilities, either mobile or complete at each location.
 - (d) Devise flexible program to meet personal needs and M.P.A. community needs.
4. Residence Coordinators -- East 2, West 2, Farm 1, will be assisted by V.O.P. and volunteers. Both house coordinators will share in the following:
- (a) Work with house members re new members, budgeting, adjusting to communal living.
 - (b) Be a resource person re crisis problems, welfare and agencies.
 - (c) Assist house with integration in M.P.A. programs (Farm integrates in own community).
 - (d) Develop new ways of approaching problems of loneliness and isolation among members.
 - (e) Farm coordinator will carry out all above activities that he considers relevant.

B. OFFICE COMMITTEE.

1. Secretary, assisted by V.O.P. will:
 - (a) Be assessable to all coordinators for typing reports, letters, etc.
 - (b) Keep files re M.P.A. business, M.P.A. phone numbers, organizations and helpful professionals.
 - (c) Be familiar with what's happening in committees
 - (d) Be a resource person to coordinators re meetings, activities.
2. Treasurer will:
 - (a) handle payroll
 - (b) handle petty cash.
 - (c) Keep books
 - (d) Be a resource person for budgeting.
3. One maintenance coordinator will be assist by V.O.P. and volunteers and will:
 - (a) Organize general cleaning at drop-in.
 - (b) Organize clean-up crew for special occasions.
 - (c) Do general repairs.
 - (d) Work with volunteers if special repairs needed.
4. Library will be staffed by volunteers and will:
 - (a) Develop a people's library.
 - (b) Develop a research library.
5. One transportation coordinator will be assisted by volunteers and will:
 - (a) Arrange transport for groups between centers and in community
 - (b) Assist residences with welfare, medical and food trips.
 - (c) Arrange transport for activities, crafts and moving.
 - (d) Organize schedule.
 - (e) will not provide a crisis vehicle.

PLANT CO-ORDINATION:

1. Where is not
2. It should get itself together and if not should be abolished.
3. There should be a flow of people both to and from the farm.
4. There is lack of a clear definition of exactly what function the farm is supposed to perform.
5. There is an immediate need to meet with Mike and require that he attend specific meetings.
6. The discussion of the future of the farm should be related to that of transportation.

*Review in 3 mos
mid Jan/73*

TREASURER:

1. More frequent financial reports.
2. Regular budget meetings.
3. There should be more help - perhaps from the volunteers.

PLANTING CO-ORDINATORS:

1. They should be dropped and reassigned - one to each of the centers.

GENERAL:

1. It was recommended that a transportation committee and subsequent position be established.
2. There should be a review of hiring and firing procedure.
3. A minority report recommended that there be a paid position for cleaning and repair.
4. Duties should be defined more clearly.
5. *New Coordinators remained after 3 mos*

the city. Each residence has a co-ordinator as a resource person, but house decisions, problems and interaction are generally handled by people living there. Standing by, doing little at certain times, is one of the hardest parts of helping people solve their own problems. Offering encouragement and support only when needed usually results, in our experience, in people finding their own solutions. Of course, if the problem gets to be too much for persons to handle themselves, they have the other people in the house or a co-ordinator to help them through the worst.

The rules are few and basic:

No illegal drugs

No violence

No alcohol

No interfering with the quiet activities of others

Rent, food and utilities are paid by the residents

More volunteers are always needed. If you are interested in helping, phone or drop in and visit. We need people to answer phones, talk to people, help with activities -- there are many possibilities.

THE MENTAL PATIENTS



ASSOCIATION information leaflet

Drop-in Centre: 1982 W. 6th Ave.
Phone: 738-5177, 738-1422

MPA

The Mental Patients Association (MPA) is a registered non-profit society composed primarily of ex-mental patients. Our structure and approach to mental health differs radically from that of hospitals and professionals in that we feel people who have gone through rough times themselves are qualified to help others going through similar experiences. The emphasis is on concern and empathy. We are also working for changes in the present Mental Health Act to give people in hospital more control over their own lives.

MPA is constantly growing, and continually changing, re-assessing and restructuring. The process of trial and error is sometimes tedious, but provides an excellent learning experience. We, as a group, are stronger because of it. Since every member has an equal say in how MPA is run, everybody has a chance to learn from our mistakes and celebrate our successes.

THE DROP-IN CENTRE

The drop-in centre is at 1982 W. 6th Ave. It is open seven days a week. The centre provides assistance and information in many areas, such as:

Housing

Crisis

Crafts

Activities

Welfare and Unemployment problems

Vancouver Opportunities Program (extra money for people on welfare for part-time work with MPA)

Sports

There is enough flexibility and

freedom at the drop-in centre so that any member may start up his or her own activities. This allows creative persons to contribute to the full extent of their abilities. Arts/Workshop facilities are in constant use and some members are able to sell their work. In the drop-in centre you will notice artwork and custom designed cabinets which have been made by members. People are welcome to drop in and:

chat

tackle a problem

have a coffee

make something in crafts

learn something

teach something

participate in activities

start new activities

or just sit around and do what

feels comfortable

Our phone numbers are 738-5177 and 738-1422.

Sometimes, due to a number of things happening at one time, a new face isn't recognized at once. It's hard to come to a new place alone and not have anyone recognize you but if you approach one of us we think you'll find we're a pretty open bunch--just give us a chance.

RESIDENCES

Since it is a fact that most of our members are on extremely low incomes and since it is also a fact that most people coming out of hospital or going through emotional difficulties suffer further by living in a dingy single room (the only kind of accommodation available to those on a low income), it was simply common sense to set up an alternative. The only way we could do this was to set up group houses -- so we did it.

MPA currently has four houses in

M.P.A. Re-Organization

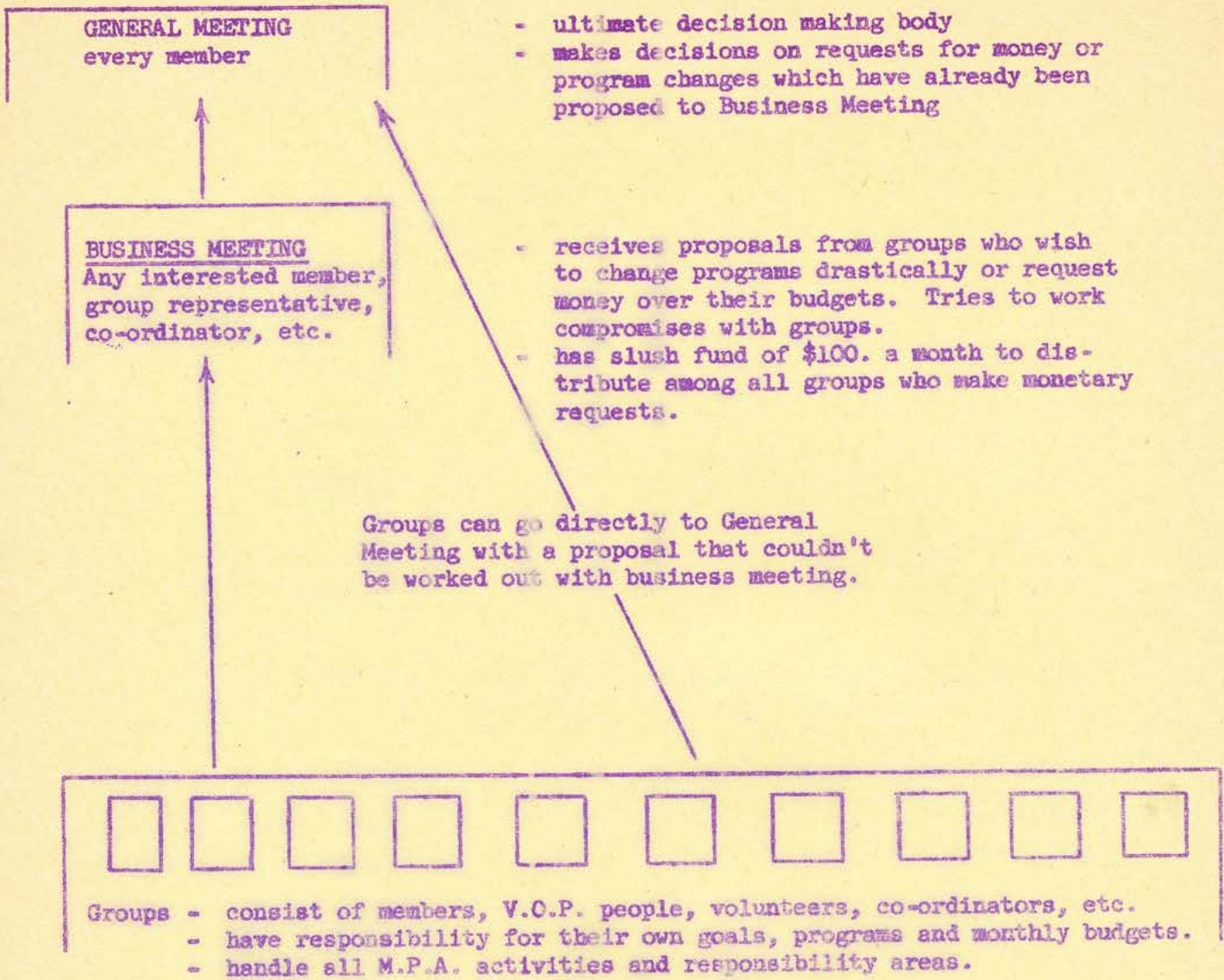
Nov 8/72 Gen mtg

Proposal #1 - Jobs

- 2 West End Coordinators instead of one
- 2 East End Coordinators instead of one
- 1 Farm Coordinator (same as now)
- 2 Drop-In Coordinators (instead of one - to deal with VOP/volunteers/activities/
relate to drop-ins.)
1 Activities
- 1 Crafts Coordinator (same as now)
- 1 Secretary (same as now)
- 1 Treasurer (same as now)
- 1 Transportation Coordinator (to drive people to and from activities; assist
residents with transport needs; improve personal contact between facilities.)
- 2 Political-Legal Action Coordinators (same as now)
- 1 Communications Coordinator (to edit newsletter, improve it, increase circu-
lation, develop more written contact with community.)
- 2 Community Coordinators (same as present Administrative Coordinators except
one will: involve MPA with other self-help groups; stimulate inter-group social
events; contact police, hospitals; organize P.R. and help political Action Co-
ordinators)
- 1 Membership Coordinator (to organize a group to go out and meet active and inactive
members and re-involve them.)

M.P.A. RE-ORGANIZATION

PROPOSAL 2 STRUCTURE



GENERAL / BUDGETS

2. Only groups requiring monthly budgets should get them. These groups at present are:

- ACTIVITIES
- CRAFTS
- FINANCE
- MAINTENANCE (DROP-IN)
- NEWSLETTER
- OFFICE
- RESEARCH
- TRANSPORTATION
- VANCOUVER OPPORTUNITIES PROGRAM
- LIBRARY

3. Groups not requiring regular budgets can make special requests to Business Meeting and to General Meeting.

4. To establish their monthly budgets groups should: present a dittoed request to the Finance group, work out an agreeable budget, then present it to the Business Meeting and then to the General Meeting for final approval.

5. After monthly budgets have been established, groups only go to the Business Meeting and the General Meeting for approval of drastic program changes or of expenses beyond their monthly budgets.

for Tues Mty
Nov 7

See also re-structuring folder

MPA STRUCTURE PROPOSAL OUTLINE

- a) Every MPA group be given a monthly budget and responsibility for its own short term goals and programs.
- b) Formation of 19 paid positions with groups of members, VOP people, volunteers, and co-ordinators forming within each ~~group~~ job area.
- c) -It will be the responsibility of the Business Meeting to review and refine proposals from other groups and the groups submit these proposals to the General Meeting.

-It will be the responsibility of the Business Meeting to review and refine long term and major program proposals from each small group and bring those recommendations to the General Meeting, with the understanding that any group may appeal a Business Meeting decision and bring it directly to the General Meeting, further that the Business Meeting Have a slush fund of \$100.

M.P.A. STRUCTURE PROPOSAL

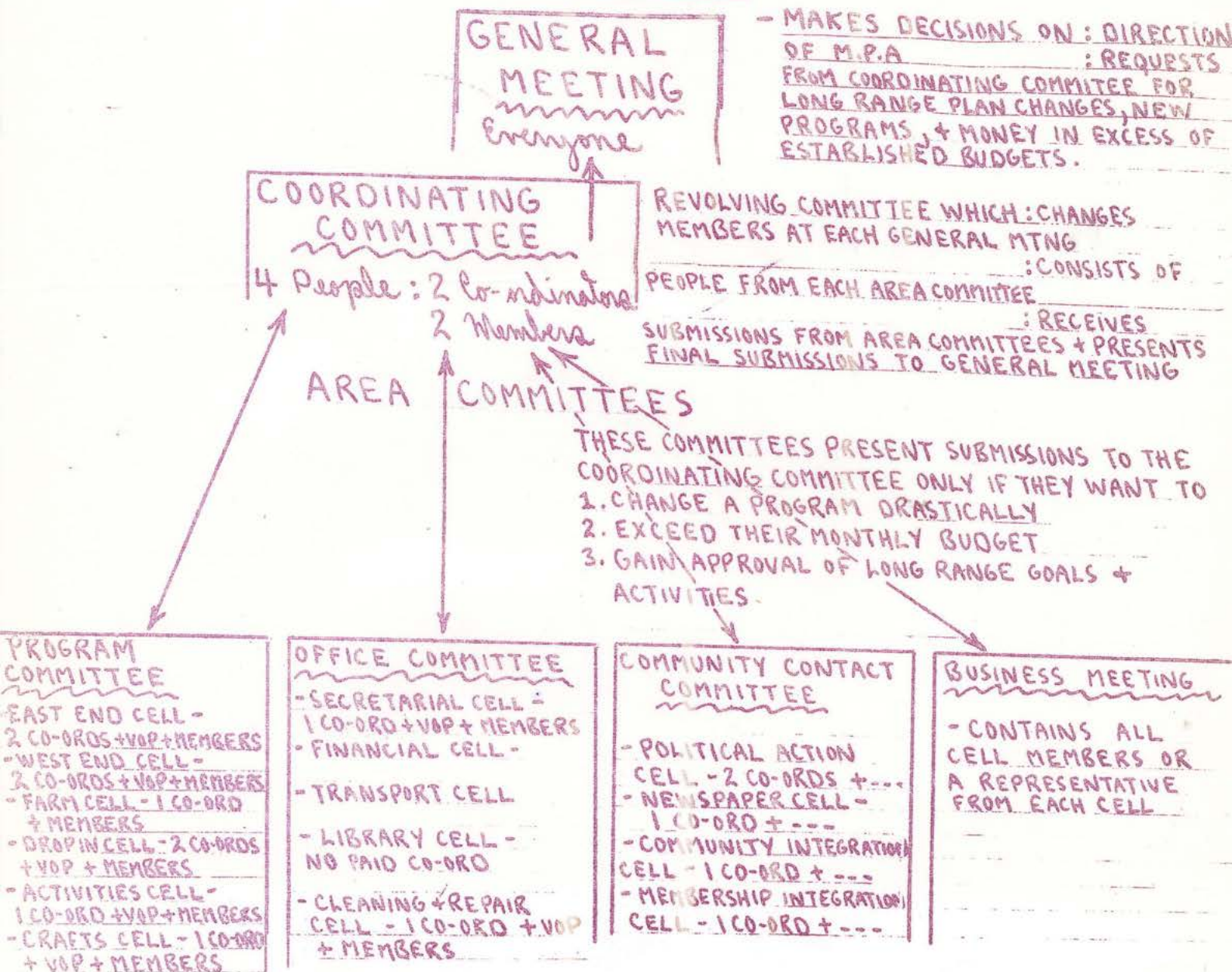
by: Avi / Barry / Debbie / Dick W. / Fran / Franc / Patty
and Tony D.

This plan differs from present M.P.A. structure in that it suggests: (a.) Every M.P.A. committee be given a monthly budget + responsibility for its own short-term goals + programs. (b.) Formation of 18 paid positions with cell groups of members, V.O.P. people, volunteers and co-ordinators forming within each job area.

(c.) Creation of a Coordinating Committee to review + refine proposals from other committees + to submit these proposals to the General Meeting.

(d.) Strict definition of each co-ordinator's job.

STRUCTURE



STRUCTURE

GENERAL MEETING
Everyone

- MAKES DECISIONS ON: DIRECTION OF M.P.A
: REQUESTS FROM COORDINATING COMMITTEE FOR LONG RANGE PLAN CHANGES, NEW PROGRAMS, & MONEY IN EXCESS OF ESTABLISHED BUDGETS.

COORDINATING COMMITTEE
4 People: 2 Co-ordinators
2 Members

REVOLVING COMMITTEE WHICH: CHANGES MEMBERS AT EACH GENERAL MTNG
: CONSISTS OF PEOPLE FROM EACH AREA COMMITTEE
: RECEIVES SUBMISSIONS FROM AREA COMMITTEES & PRESENTS FINAL SUBMISSIONS TO GENERAL MEETING

AREA COMMITTEES

THESE COMMITTEES PRESENT SUBMISSIONS TO THE COORDINATING COMMITTEE ONLY IF THEY WANT TO
1. CHANGE A PROGRAM DRASTICALLY
2. EXCEED THEIR MONTHLY BUDGET
3. GAIN APPROVAL OF LONG RANGE GOALS & ACTIVITIES.

PROGRAM COMMITTEE
- EAST END CELL - 2 CO-ORDS + VOP + MEMBERS
- WEST END CELL - 2 CO-ORDS + VOP + MEMBERS
- FARM CELL - 1 CO-ORD + MEMBERS
- DROP IN CELL - 2 CO-ORDS + VOP + MEMBERS
- ACTIVITIES CELL - 1 CO-ORD + VOP + MEMBERS
- CRAFTS CELL - 1 CO-ORD + VOP + MEMBERS

OFFICE COMMITTEE
- SECRETARIAL CELL - 1 CO-ORD + VOP + MEMBERS
- FINANCIAL CELL -
- TRANSPORT CELL
- LIBRARY CELL - NO PAID CO-ORD
- CLEANING & REPAIR CELL - 1 CO-ORD + VOP + MEMBERS

COMMUNITY CONTACT COMMITTEE
- POLITICAL ACTION CELL - 2 CO-ORDS + ---
- NEWSPAPER CELL - 1 CO-ORD + ---
- COMMUNITY INTEGRATION CELL - 1 CO-ORD + ---
- MEMBERSHIP INTEGRATION CELL - 1 CO-ORD + ---

BUSINESS MEETING
- CONTAINS ALL CELL MEMBERS OR A REPRESENTATIVE FROM EACH CELL

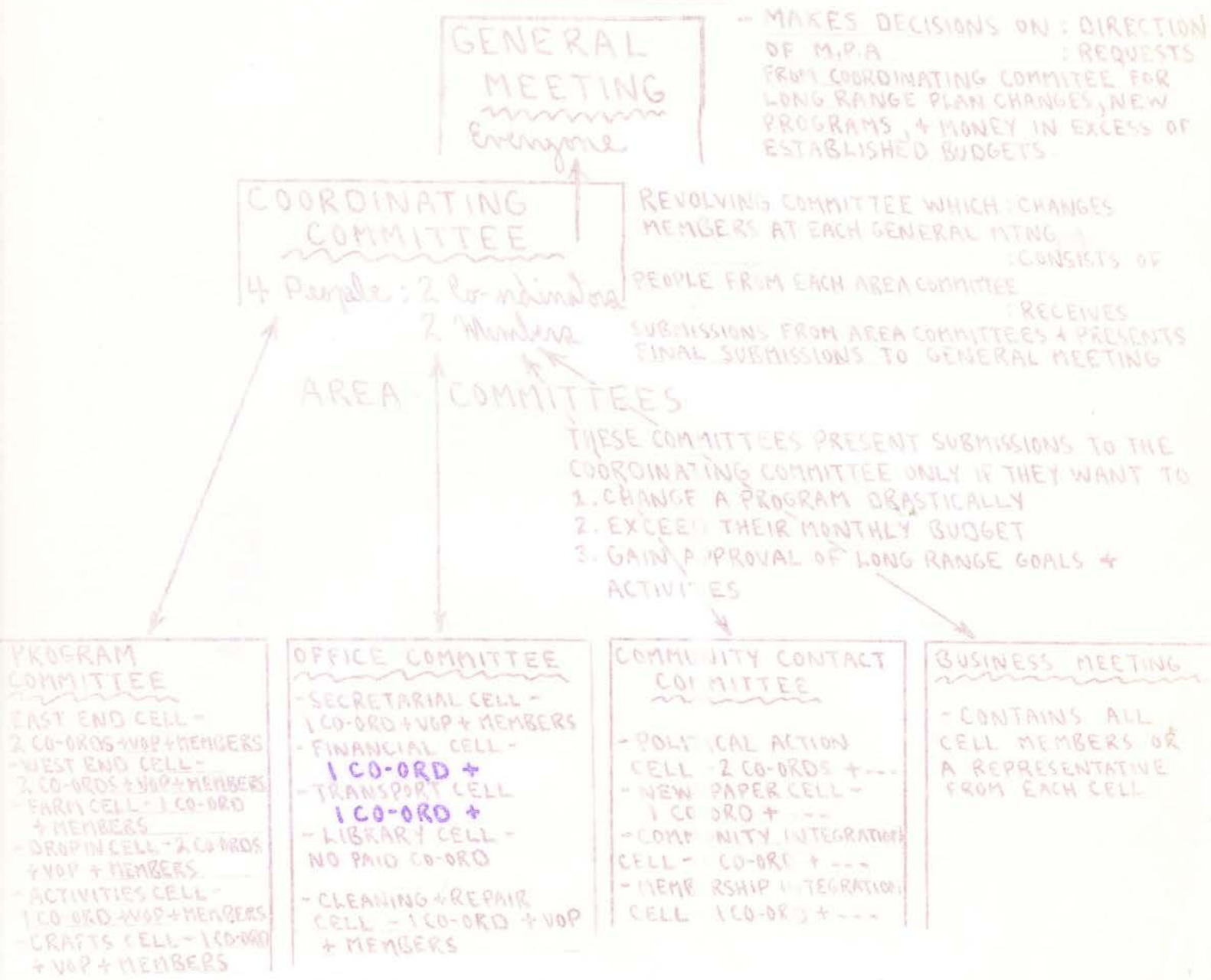
by: Avi/Barry/Debbie/Dick W., Fran/Franc/Patty
and Tony D

This plan differs from present M.P.A. structure in that it suggests: (a.) Every M.P.A. committee be given a monthly budget + responsibility for its own short-term goals + programs. (b.) Formation of 18 paid positions with cell groups of members, V.O.P. people, volunteers and co-administrators forming within each job area.

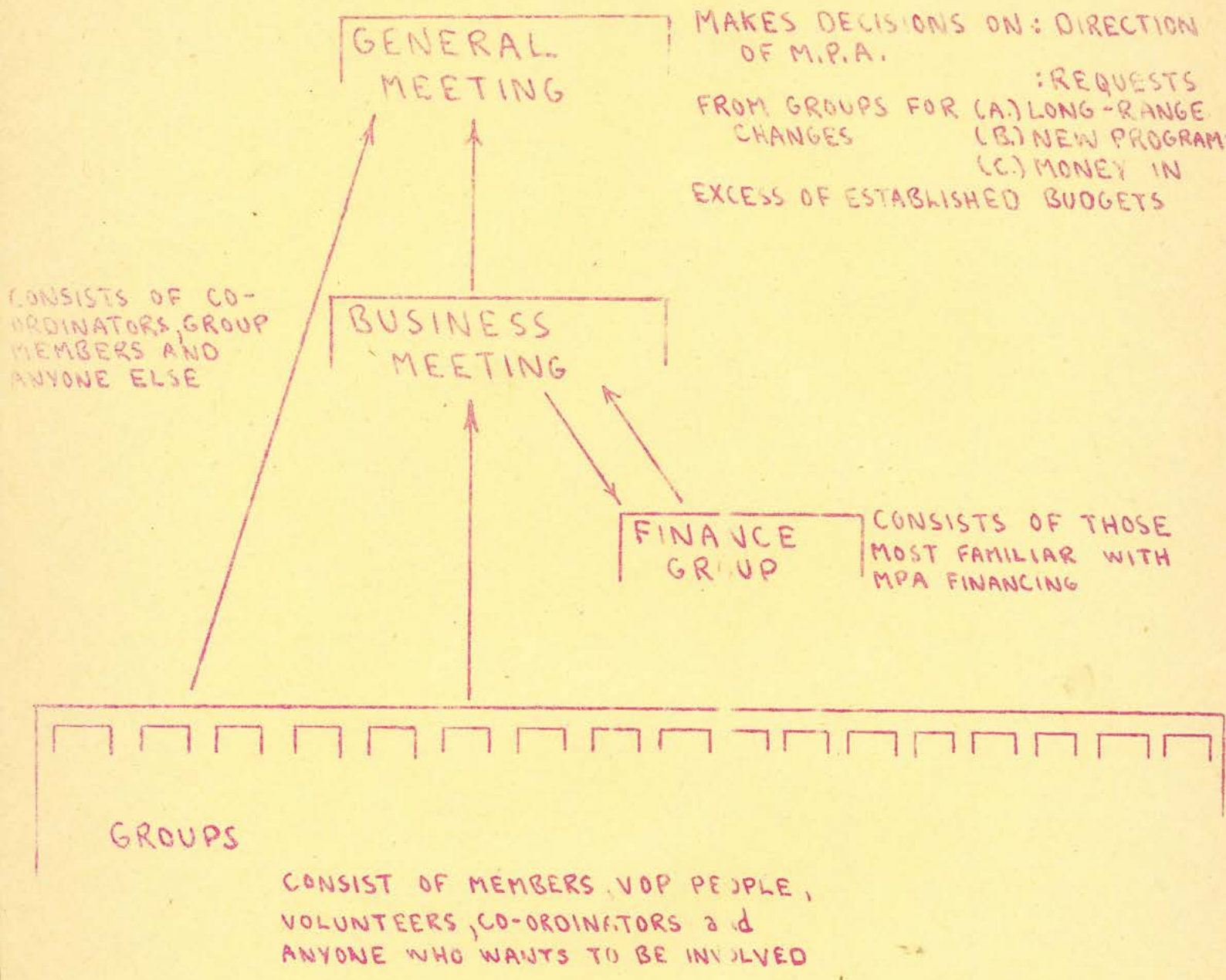
(c.) Creation of a Coordinating Committee to review + refine proposals from other committees + to submit these proposals to the General Meeting.

(d.) Strict definition of each co-administrator job.

STRUCTURE



M.P.A. STRUCTURE PROPOSAL



M.P.A. STRUCTURE PROPOSAL

GENERAL MEETING

MAKES DECISIONS ON: DIRECTION OF M.P.A.

REQUESTS FROM GROUPS, FOR (A) LONG-RANGE CHANGES

(B) NEW PROGRAM

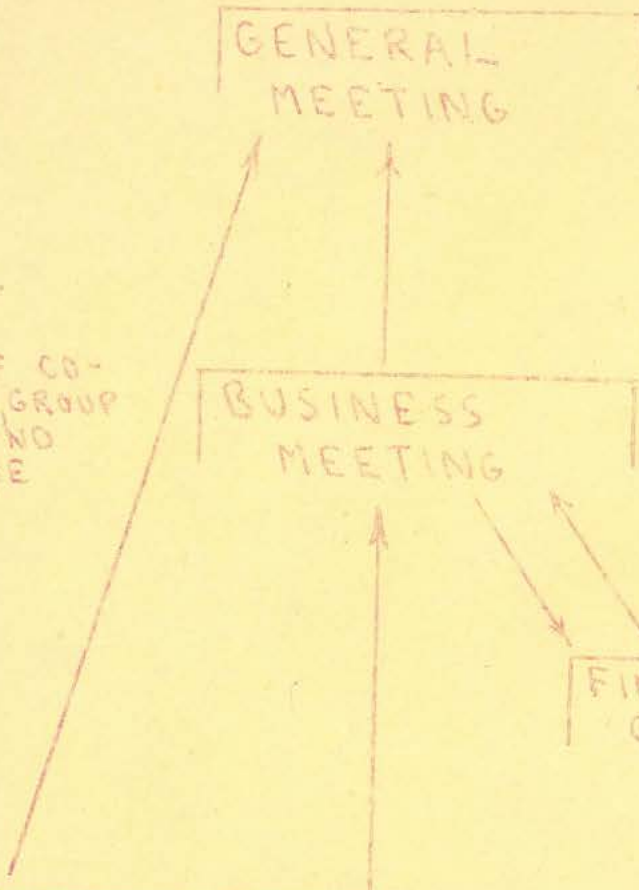
(C) MONEY IN EXCESS OF ESTABLISHED BUDGETS

BUSINESS MEETING

CONSISTS OF CO-ORDINATORS, GROUP MEMBERS AND ANYONE ELSE

FINANCE GROUP

CONSISTS OF THOSE MOST FAMILIAR WITH MPA FINANCING

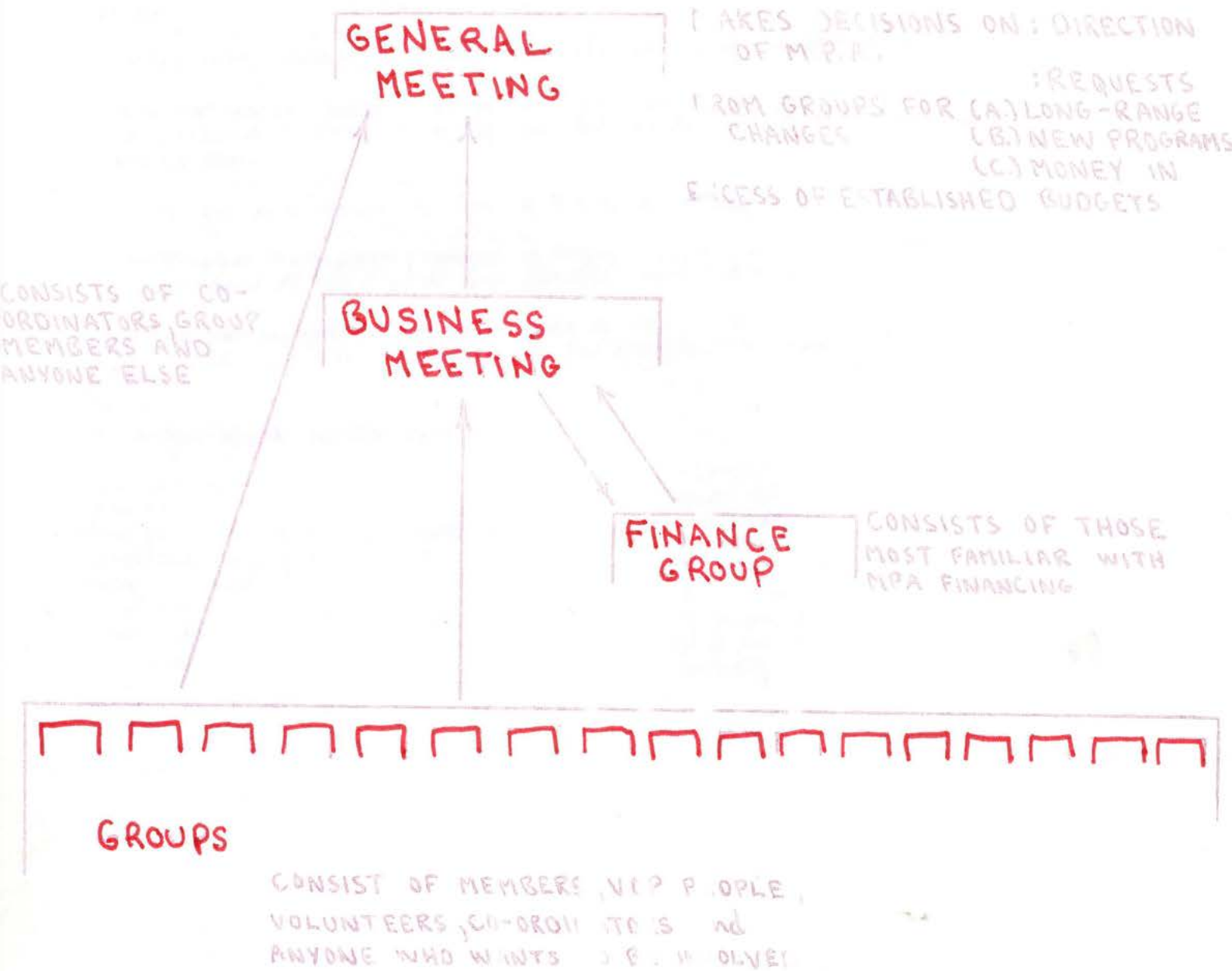


GROUPS

CONSIST OF MEMBERS, NOT PEOPLE VOLUNTEERS, CO-ORDINATORS and ANYONE WHO WANTS TO BE INVOLVED



M.P.A. STRUCTURE PROPOSAL



RECOMMENATIONS WITHIN THE NEW STRUCTURE

1. Groups should go to the Business Meeting with all new, different proposals which are long range or beyond the group's budget.
2. The group and the business meeting should work together to develop mutually acceptable proposal which the group then takes to the General Meeting.
3. If a group's proposal can't be worked out and accepted by the Business Meeting the group may take it directly to the General Meeting.
4. Each group should present a dittoed budget request for a regular monthly budget to the Finance Group, then to the Business Meeting and then to the General Meeting.
5. The Finance, Elections, Housing and Telephone Groups should not require budgets.
6. Once the regular budgets are established, special proposals should be dittoed and distributed to everyone before the Business Meeting so people will have time to review them.
7. Group proposals should be first on the agenda of Business Meetings.
8. The Finance Group should publish a regular financial statement every month and a statement of the Groups' expenditures every 3 months.
9. A Vancouver Opportunities pool should be established and should elect a representative who will be responsible for placement of people within the pool.
10. Groups should involve people in:
 - Activities
 - Crafts
 - Cleaning, Decorating and Repairs
 - Community Integration
 - Drop-In Centre
 - East End
 - West End
 - Elections
 - Farm
 - Library
 - Membership Integration
 - Newspaper
 - Office
 - Political Legal Action
 - Telephoning
 - Transportation
 - Finance
 - Housing

RECOMMENDATIONS WITHIN THE NEW STRUCTURE

1. Groups should go to the Business Meeting with all new, different proposals which are long range or beyond the group's budget.
2. The group and the business meeting should work together to develop mutually acceptable proposals which the group then takes to the General Meeting.
3. If a group's proposal can't be worked out and accepted by the Business Meeting the group may take it directly to the General Meeting.
4. Each group should present a dittoed budget request for a regular monthly budget to the Finance Group, then to the Business Meeting and then to the General Meeting.
5. The Finance, Elections, Housing and Telephone Groups should not require budgets.
6. Once the regular budgets are established, special proposals should be dittoed and distributed to everyone before the Business Meeting so people will have time to review them.
7. Group proposals should be first on the agenda of Business Meetings.
8. The Finance Group should publish a regular financial statement every month and a statement of the Group's expenditures every 3 months.
9. A Vancouver Opportunities pool should be established and should elect a representative who will be responsible for placement of people within the pool.

10. Groups should involve people in:

- | | |
|-----------------------------------|-------------------------|
| -Activities | -Library |
| -Crafts | -Membership Integration |
| -Cleaning, Decorating and Repairs | -Newspaper |
| -Community Integration | -Office |
| -Drop-In Centre | -Political Legal Action |
| -East End | -Telephoning |
| -West End | -Transportation |
| -Elections | -Finance |
| -Firm | -Housing |

RECOMMENATIONS WITHIN THE NEW STRUCTURE

1. Groups should go to the Business Meeting with all new, different proposals which are long range or beyond the group's budget.
2. The group and the business meeting should work together to develop mutually acceptable proposal which the group then takes to the General Meeting.
3. If a group's proposal can't be worked out and accepted by the Business Meeting the group may take it directly to the General Meeting.
4. Each group should present a dittoed budget request for a regular monthly budget to the Finance Group, then to the Business Meeting and then to the General Meeting.
5. The Finance, Elections, Housing and Telephone Groups should not require budgets.
6. Once the regular budgets are established, special proposals should be dittoed and distributed to everyone before the Business Meeting so people will have time to review them.
7. Group proposals should be first on the agenda of Business Meetings.
8. The Finance Group should publish a regular financial statement every month and a statement of the Group's expenditures every 3 months.
9. A Vancouver Opportunities pool should be established and should elect a representative who will be responsible for placement of people within the pool.
10. Groups should involve people in:
 - Activities
 - Crafts
 - Cleaning, Decorating and Repairs
 - Community Integration
 - Drop-In Centre
 - East End
 - West End
 - Elections
 - Farm
 - Library
 - Membership Integration
 - Newspaper
 - Office
 - Political Legal Action
 - Telephoning
 - Transportation
 - Finance
 - Housing

RECOMMENATIONS WITHIN THE NEW STRUCTURE

1. Groups should go to the Business Meeting with all new, different proposals which are long range or beyond the group's budget.
2. The group and the business meeting should work together to develop mutually acceptable proposal which the group then takes to the General Meeting.
3. If a group's proposal can't be worked out and accepted by the Business Meeting the group may take it directly to the General Meeting.
4. Each group should present a dittoed budget request for a regular monthly budget to the Finance Group, then to the Business Meeting and then to the General Meeting.
5. The Finance, Elections, Housing and Telephone Groups should not require budgets.
6. Once the regular budgets are established, special proposals should be dittoed and distributed to everyone before the Business Meeting so people will have time to review them.
7. Group proposals should be first on the agenda of Business Meetings.
8. The Finance Group should publish a regular financial statement every month and a statement of the Group's expenditures every 3 months.
9. A Vancouver Opportunities pool should be established and should elect a representative who will be responsible for placement of people within the pool.
10. Groups should involve people in:
 - Activities
 - Crafts
 - Cleaning, Decorating and Repairs
 - Community Integration
 - Drop-In Centre
 - East End
 - West End
 - Elections
 - Farm
 - Library
 - Membership Integration
 - Newspaper
 - Office
 - Political Legal Action
 - Telephoning
 - Transportation
 - Finance
 - Housing

C. COMMUNITY CONTACT COMMITTEE

1. Two Political Action Coordinators assisted by volunteers will carry on their present projects:
 - (a) Continuing research.
 - (b) Implementation of completed brief and re-written Mental Health Act at government level.
 - (c) Contacting General public, agencies, others working in this area.
 - (d) Publicizing work being done or contemplated to members and general public.
 - (e) Develop new projects in this field.
2. One Newspaper and Communication Coordinator will be assisted by V.O.P. and volunteers and will:
 - (a) Coordinate both a newsletter and home news on a regular basis.
 - (b) Maintain internal communication with coordinators and members.
 - (c) Make contacts with community at large.
3. One Community Integration Coordinator will:
 - (a) involve M.P.A. with other self-help groups -- joint activities and programs.
 - (b) Stimulate social happenings between M.P.A. and community groups; *contact police, hospitals, liberation groups. Organize P.R., political activity, help organize politics night.*
4. One Membership Integration Coordinator will be assisted by volunteers and will:
 - (a) Organize a group to go out and meet active and inactive members for the purpose of re-involvement in M.P.A.

ALL COORDINATORS WILL:

1. Attend meetings in their designated interest areas.
2. Serve on the Coordinating Committee when required.
3. Attend General Meetings.
4. Write a monthly report of activities and plans.
5. Be available to write for grants and make monthly reports to funding agencies.

*Suggestion: Another Community Integration position involving:
Grants; House purchasing; Government contact; Political
P.R.; Work with other Community Integration coordinator.*

Group 3

enroute groups
crafts - abolition of smoking
housing, welfare,
employment
we need another program
center

Program Center

9 approved - craft review 3 mo - if not working, abolish

Off Center

4 approved

- 1 Sec
- 1 Treas
- 1 Transp
- 1 Maintenance (Fran + me check w Lewis)

Also look into library training - Diane

Community Contact Center

Barb

- 1 Newspaper Editor
- 2 Political-Legal Action
- 2 Community Integration Coord

Community integration - incl's Pol Nite
- organizing P.R.

Membership Integration - work with transp. coord.

Barry Comm integr

- com & grps
- Pol Nite
- Police
- Hospitals
- Mental Health Agencies

1 Membership Integration
can it work unless
we get the right person?

Barb - general coord.

- library, newsletter
- office, word, housing (purchase + lease)
- donations, women, child care, [welfare]
- crisis, research, interview visits
- attend all mtgs



- Grants
- Housing Purchase
- Part Contact
- External PR
- Work

Deussions

- Elections confel - me, Barb, Gerald
- Housing
- Phone - Membership integratn?

Friendship eligies
Cell structure to avoid.

Now

LIP / Conference / Reorganization

Proposed

2P 1A

Drop-in 2 Coord LIP 2
 1 Crafts crafts 1
 2 Admin cyc 2
 1 Off coord LIP 1
 1 Treasurer LIP 1

Drop in * 3 (2 Vol/Vol + 1 Act)
 NL 1 Crafts 1P (?) or 4th Drop-in Coord
 NL 2 Admin 2A } or 3 off Coord
 1 Off coord 1A
 1 Treasurer 1A

Farm 1 Coord cyc 1

Farm NL 1 (*) P (Add 1 later, if)

WE 1 Coord LIP 1

WE 2 P

Earl - Graveyard
Fred Fisher - Maintenance

EE 1 Coord LIP 1

EE 2 P

Transp NL 1

10 LIP

Floating 3 2 LIP 1 CYC

Rsch

Donner runs out soon in Jan
2 2A
16 (17 v. Farm)

4 CYC
1 Crafts

Rsch 2
 Donner 2 4 CYC
 1 Crafts
 2 Donner
 8 LIP
 15

8P 7A

Extras

2 Donner
 4 CYC
 1 Crafts
 13 LIP
 20

Dummies

Lindy
Barb C.

LIP

Kathy
Tony
Kaura
Gerry
Dick W.
Fran
Franc
Ursula

CYC

Lenny
Barry
Mike
Janet

Crafts

Koko

Donner

Dick B
Gerald

* ~~None~~ 2A

1 P.R.

[2 Crisis at EE]

~~2 Rsch~~

1 Newspaper Editor

~~1 Employment~~

1 Housing

1 Maintenance - (Fred F)

Kerry
Gerry

RECOMMENDATIONS ON PROPOSED STRUCTURE PLAN
from Special General Meetings held Oct. 18th, 25th and Nov. 1st.

Recommended

-that we have the following 19 positions

- 2 East End Co-ords
- 2 West End Co-ords
- 3 Drop-In
- 1 Fairs
- 1 Crafts
- 1 Office
- 1 Treasury
- 1 Transport
- 2 Political Action
- 1 Newspaper & Communication
- 1 Membership
- 1 Library
- 2 Community

-that all co-ordinators work with VOPs and volunteers in their particular area

-that the residences ratify the choice of the co-ordinator that will be assigned to their house.

-that the Drop-In Co-ordinators carry on working with the present volunteers and over an extended period of time try to increase the number

-that each small group send a representative to the Finance Meeting making budgetary requests and that Gerry (and whoever makes up the Finance Group) work up an overall budget to bring to the General Meeting

-that we apply to LIP for 15 salaries

M.P.A. STRUCTURE PROPOSAL

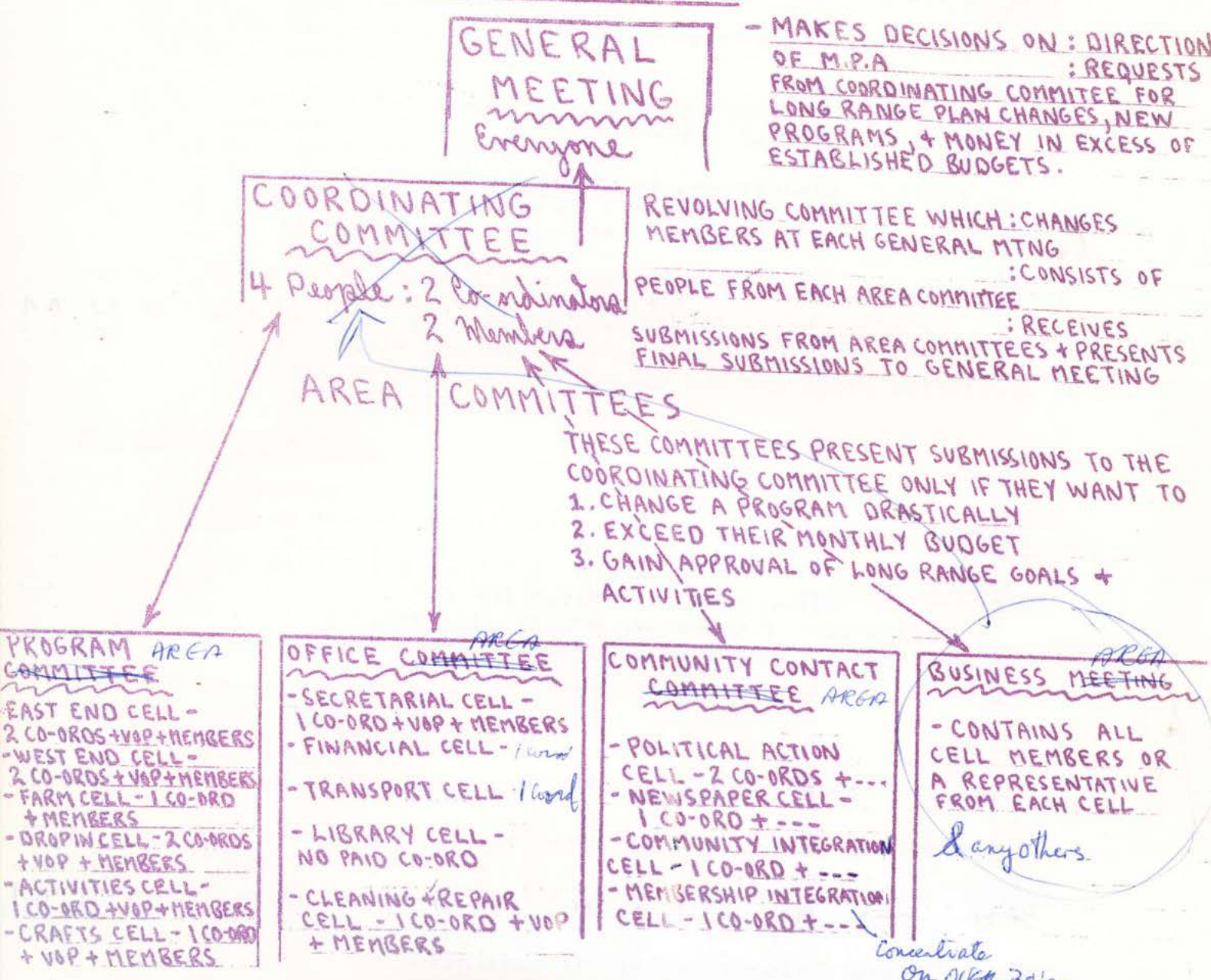
by: Avi / Barry / Debbie / Dick W. / Fran / Franc / Patty and Tony D.

This plan differs from present M.P.A. structure in that it suggests: (a.) Every M.P.A. committee be given a monthly budget + responsibility for its own short-term goals + programs. (b.) Formation of 18 paid positions with cell groups of members, V.O.P. people, volunteers and co-ordinators forming within each job area.

(c.) Creation of a Coordinating Committee to review + refine proposals from other committees + to submit these proposals to the General Meeting.

(d.) Strict definition of each co-ordinator's job.

STRUCTURE



STRUCTURE

GENERAL MEETING
Everyone

- MAKES DECISIONS ON: DIRECTION OF M.P.A
: REQUESTS FROM COORDINATING COMMITTEE FOR LONG RANGE PLAN CHANGES, NEW PROGRAMS, + MONEY IN EXCESS OF ESTABLISHED BUDGETS.

COORDINATING COMMITTEE
4 People: 2 Co-ordinators
2 Members

REVOLVING COMMITTEE WHICH: CHANGES MEMBERS AT EACH GENERAL MTNG
: CONSISTS OF PEOPLE FROM EACH AREA COMMITTEE
: RECEIVES SUBMISSIONS FROM AREA COMMITTEES + PRESENTS FINAL SUBMISSIONS TO GENERAL MEETING

AREA COMMITTEES

THESE COMMITTEES PRESENT SUBMISSIONS TO THE COORDINATING COMMITTEE ONLY IF THEY WANT TO

1. CHANGE A PROGRAM DRASTICALLY
2. EXCEED THEIR MONTHLY BUDGET
3. GAIN APPROVAL OF LONG RANGE GOALS + ACTIVITIES

PROGRAM AREA COMMITTEE

- EAST END CELL - 2 CO-ORDS + VOP + MEMBERS
- WEST END CELL - 2 CO-ORDS + VOP + MEMBERS
- FARM CELL - 1 CO-ORD + MEMBERS
- DROP IN CELL - 2 CO-ORDS + VOP + MEMBERS
- ACTIVITIES CELL - 1 CO-ORD + VOP + MEMBERS
- CRAFTS CELL - 1 CO-ORD + VOP + MEMBERS

AREA

OFFICE COMMITTEE

- SECRETARIAL CELL - 1 CO-ORD + VOP + MEMBERS
- FINANCIAL CELL - 1 CO-ORD
- TRANSPORT CELL - 1 CO-ORD
- LIBRARY CELL - NO PAID CO-ORD
- CLEANING + REPAIR CELL - 1 CO-ORD + VOP + MEMBERS

AREA

COMMUNITY CONTACT COMMITTEE

- POLITICAL ACTION CELL - 2 CO-ORDS + ...
- NEWSPAPER CELL - 1 CO-ORD + ...
- COMMUNITY INTEGRATION CELL - 1 CO-ORD + ...
- MEMBERSHIP INTEGRATION CELL - 1 CO-ORD + ...

AREA

BUSINESS MEETING

- CONTAINS ALL CELL MEMBERS OR A REPRESENTATIVE FROM EACH CELL

& any others.

- 1
- 2 EG
- 2 WE
- 1 Farm
- 2 Drop in
- 1 Acti.
- 1 Crafts

- 9

- 1 Sec
- 1 Treasurer
- 1 Transport
- 1 Maintenance

- 4

- 2 political research
- 1 Newspaper
- 2 Community integration
- 1 Membership integration

- 6

concentrate on OVER 30's



JOB DESCRIPTIONS FOR PROPOSED FUNCTIONAL

STRUCTURING OF M.P.A.

A. PROGRAMS COMMITTEE.

1. Two Drop-in Center Coordinators will be assisted by V.O.P. and volunteers and will:
 - (a) organize V.O.P. personnel to work with all coordinators.
 - (b) Arrange volunteer program and scheduling.
 - (c) Make personal contact with all drop-ins.
 - (d) Do nothing else.
2. One Activities Coordinator will be assisted by V.O.P. and volunteers and will:
 - (a) Organize activities with activity committee.
 - (b) Coordinate activity committee.
 - (c) Cooperate with residence activities.
 - (d) relate to drop-in people.
3. One Crafts Coordinator will be assisted by V.O.P. and volunteers and will:
 - (a) Advertise for community people to participate on a cost paying basis.
 - (b) Take craft activities regularly to all M.P.A. locations.
 - (c) Provide facilities, either mobile or complete at each location.
 - (d) Devise flexible program to meet personal needs and M.P.A. community needs.
4. Residence Coordinators -- East 2, West 2, Farm 1, will be assisted by V.O.P. and volunteers. Both house coordinators will share in the following:
 - (a) Work with house members re new members, budgeting, adjusting to communal living.
 - (b) Be a resource person re crisis problems, welfare and agencies
 - (c) Assist house with integration in M.P.A. programs (Farm integrates in own community).
 - (d) Develop new ways of approaching problems of loneliness and isolation among members.
 - (e) Farm coordinator will carry out all above activities that he considers relevant.

B. OFFICE COMMITTEE.

1. Secretary, assisted by V.O.P. will:
 - (a) Be assessable to all coordinators for typing reports, letters, etc.
 - (b) Keep files re M.P.A. business, M.P.A. phone numbers, organizations and helpful professionals.
 - (c) Be familiar with what's happening in committees
 - (d) Be a resource person to coordinators re meetings, activities.
2. Treasurer will:
 - (a) handle payroll
 - (b) handle petty cash.
 - (c) Keep books
 - (d) Be a resource person for budgeting.
3. One maintenance coordinator will be assist by V.O.P. and volunteers and will:
 - (a) Organize general cleaning at drop-in.
 - (b) Organize clean-up crew for special occasions.
 - (c) Do general repairs.
 - (d) Work with volunteers if special repairs needed.
4. Library will be staffed by volunteers

COMMUNITY CONTACT COMMITTEE

1. Two Political Action coordinators assisted by volunteers will carry on their present projects:
 - (a) Continuing research.
 - (b) Implementation of completed brief and re-written Mental Health Act at government level.
 - (c) Contacting General public, agencies, others working in this area.
 - (d) Publicizing work being done or contemplated to members and general public.
 - (e) Develop new projects in this field.
2. One Newspaper and Communication Coordinator will be assisted by V.O.P. and volunteers and will:
 - (a) Coordinate both a newsletter and home news on a regular basis.
 - (b) Maintain internal communication with coordinators and members.
 - (c) Make contacts with community at large.
3. One Community Integration Coordinator will:
 - (a) involve M.P.A. with other self-help groups -- joint activities and programs.
 - (b) Stimulate social happenings between M.P.A. and community groups.
4. One Membership Integration Coordinator will be assisted by volunteers and will:
 - (a) Organize a group to go out and meet active and inactive members for the purpose of reinvovement in M.P.A.

ALL COORDINATORS WILL:

1. Attend meetings in their designated interest areas.
2. Serve on the Coordinating Committee when required.
3. Attend General Meetings.
4. Write a monthly report of activities and plans.
5. Be available to write for grants and make monthly reports to funding agencies.

AGENDA

MPA SPECIAL ELECTION MEETING, ^{May} JUNE 26, 1972

1. Cook's salary.

Candidates

2. Treasurer

- David Moses
- Gerry Walker

3. Administrative Coordinators (Two)

- Lanny Beckman
- Barry Coull
- David Moses

4. East End Center Coordinator

- Francis Phillips

5. West End Center Coordinator

- John Butler
- Jim James
- Tom Linnman

6. Activity & Crafts Coordinator

- Coco
- Cindy Creemer
- Mike DuBelko
- Esther Heyon
- Lawrence Krane
- Glen Underwood

7. Secretary

- Cindy Creemer
- Ursula Honold
- Judy LeClair
- Dianne Lousley

8. Drop-in Center Coordinators (Two)

- Grace Risson
- Kathy Carney
- Tony Diakos
- Leslie McLeod
- Ian Robertson

9. Farm Coordinators (Two)

- Dianne Carver
- Tony Diakos
- Lloyd Howarth
- Mike Musclow
- Marc Young

10. Floating Coordinators (Three)

- Janet Bell
- John Butler
- Dianne Carver
- Franc David
- John Drake
- Futh Dworkin
- Judy Farkas
- Ursula Honold
- Leslie McLeod
- Dave Patterson
- Ian Robertson
- Glen Underwood

AGENDA

MPA SPECIAL ELECTION MEETING, ^{May} ~~JUNE~~ 26, 1972

1. Cook's salary.

Candidates

2. Treasurer

- David Moses
- Gerry Walker

3. Administrative Coordinators (Two)

- Lanny Beckman
- Barry Coull
- David Moses

4. East End Center Coordinator

- Francis Phillips

5. West End Center Coordinator

- John Butler
- Jim James
- Tom Linnman

6. Activity & Crafts Coordinator

- Coco
- Cindy Creemer
- Mike DuBelko
- Esther Heyon
- Lawrence Krane
- Glen Underwood

7. Secretary

- Cindy Creemer
- Ursula Honold
- Judy LeClair
- Dianne Lousley

8. Drop-in Center Coordinators (Two)

- Grace Risson
- Kathy Carney
- Tony Diakos
- Leslie McLeod
- Ian Robertson

9. Farm Coordinators (Two)

- Dianne Carver
- Tony Diakos
- Lloyd Howarth
- Mike Musclow
- Marc Young

10. Floating Coordinators (Three)

- Janet Bell
- John Butler
- Dianne Carver
- Franc David
- John Drake
- Futh Dworkin
- Judy Farkas
- Ursula Honold
- Leslie McLeod
- Dave Patterson
- Ian Robertson
- Glen Underwood

AGENDA

MPA SPECIAL ELECTION MEETING, ^{May} JUNE 26, 1972

1. Cook's salary.

Candidates

2. Treasurer

- David Moses
- Gerry Walker

3. Administrative Coordinators (Two)

- Lanny Beckman
- Barry Coull
- David Moses

4. East End Center Coordinator

- Francis Phillips

5. West End Center Coordinator

- John Butler
- Jim James
- Tom Linnman

6. Activity & Crafts Coordinator

- Coco
- Cindy Creemer
- Mike DuBelko
- Esther Heyon
- Lawrence Krane
- Glen Underwood

7. Secretary

- Cindy Creemer
- Ursula Honold
- Judy LeClair
- Dianne Lousley

8. Drop-in Center Coordinators (Two)

- Grace Bisson
- Kathy Carney
- Tony Diakos
- Leslie McLeod
- Ian Robertson

Ed Stanton

9. Farm Coordinators (Two)

- ~~Dianne Carver~~
- Tony Diakos
- Lloyd Howarth
- Mike Musclow
- Marc Young

Rolly Hagglen

10. Floating Coordinators (Three)

- Janet Bell
- John Butler
- Dianne Carver
- Franc David
- John Drake
- Futh Dworkin
- Judy Farkas
- Ursula Honold
- Leslie McLeod
- Dave Patterson
- Ian Robertson
- Glen Underwood